

SPRING

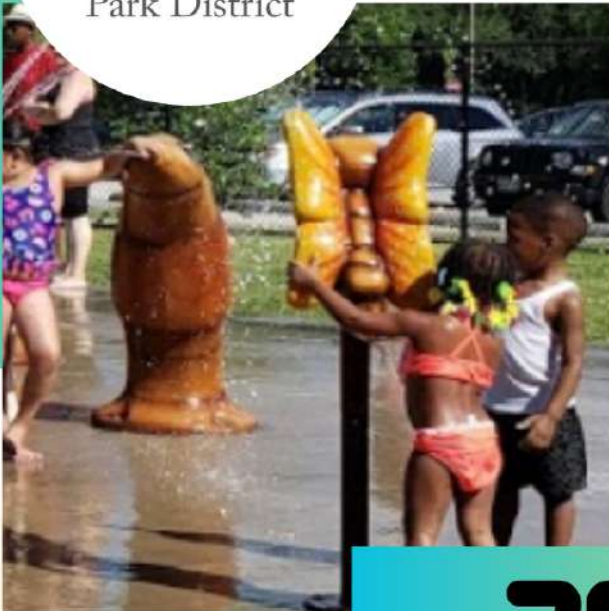
SUMMER



Olympia Fields
Park District

OLYMPIA FIELDS PARK DISTRICT

ofparks.org



2024

ofparks.org



“

The Olympia Fields Park District is possibly one of the best park districts in the south suburbs.

”

Shagmond Lowery



SUMMER CAMP

Register for All 9 Sessions, Get 1 Free!
Discount expires after May 20.
Registration must be paid in full.



- Session 1** June 3 – June 7
Session 2 June 10 – June 14
Session 3 June 17 – June 21 (*no camp June 19 – federal holiday*)
Session 4 June 24 – June 28
Session 5 July 1 – July 5 (*no camp on July 4*)
Session 6 July 8 – July 12
Session 7 July 15 – July 19
Session 8 July 22 – July 26
Session 9 July 29 – August 2

Monday - Friday, 9:00 am - 4:00 pm
Sgt. Means Park, Pavilion
\$145 Non-Resident Rate (per week)
\$125 Resident Rate (per week)

Before Care

Need to get to work before camp starts or just want to expand the fun-filled day for your child? We've got the answer for you! Join us for Before Camp activities and programming. Children will be served a snack during Before Care. Entering Grades: Kindergarten - 10th Grade
Sgt. Means Park, Pavilion \$30 Non-Resident Rate (per week) \$26 Discounted Resident Rate (per week) Monday - Friday, 7:00 am - 9:00 am

After Care

Need to work past 4:00 pm or your child just doesn't want to leave camp? Don't worry! You can extend the camp day with us until 6:00 pm. Join us for our After Camp activities and programming. Children will be served a snack during After Care.

Entering Grades: Kindergarten - 10th Grade
Sgt. Means Park, Pavilion
\$30 Non-Resident Rate (per week)
\$26 Discounted Resident Rate (per week)
Monday - Friday, 4:00 pm - 6:00 pm

Pee Wee Camp

Children in our Pee Wee Summer Camp will grow and develop while playing games, working on arts and crafts, and having fun outside. Children will play sports adapted specifically to their age and ability, and spend lots of time on the playground and exploring nature in our parks. We will also incorporate STEM in our program. Our Pee Wee's will also go on a field trip with the Youth Camp every week, and spend one day every week having a splash day either at Tolentine Park, or at Sgt. Means Park.

Youth Camp

The days of our Youth Campers are filled with sports, arts and crafts, and lots of time outside being active and exploring nature in our parks. This high energy age group will have plenty to keep them busy throughout the fun summer days. Our Youth Campers will also go on a field trip every week with the Pee Wee Camp, and spend one day every week having a splash day either Tolentine Park, or Sergeant Means Park.

Leadership Camp

Older youth can relive their summer camp days while expanding their leadership skills. Junior High and High School aged youth will play and have fun with kids their age, with the added opportunity of leadership roles. They will have opportunities to assist the counselors in planning activities for the younger kids, as well as participating in activities appropriate for their age group. They will be going on most of the same field trips as the other camps, but will occasionally take a separate field trip specifically geared towards building leadership skills. They will participate in all splash days as the Youth Camp.

PEE WEE CAMP

YOUTH CAMP

LEADERSHIP CAMP

BEFORE CARE

AFTER CARE

Entering Grades: Kindergarten, 1st, 2nd, 3rd

Entering Grades: 4th, 5th, 6th

Entering Grades: 7th, 8th, 9th, 10th

Entering Grades: Kindergarten - 10th Grade

Entering Grades: Kindergarten - 10th Grade

SUMMER CAMP STARTS JUNE 3RD!

1

LEADERSHIP

2

TEAMWORK

3

EDUCATION

4

BRAVERY

5

CITIZENSHIP

6

IMAGINATION



ZUMBA CLASS

SATURDAY WITH LISA

9:00 AM – 9:45 AM

- **\$47 NON-RESIDENT RATE**
- **\$38 DISCOUNTED RESIDENT RATE**



CONTACT
708-481-7313



ZUMBA

4

ZUMBA – SATURDAY WITH LISA

As we age, exercise continues to be of critical importance to weight management, heart health, balance, and injury prevention. ZUMBA R falls under the category of endurance training, which keeps the heart healthy and the circulatory system strong. ZUMBA R develops coordination and burns calories to starve off the weight gain that often accompanies aging.

THE BRADFORD BARN MAIN BARN ROOM

\$47 Non-Resident Rate

\$38 Discounted Resident Rate

Ages 13 and older

INSTRUCTOR: LISA MCNEIL

MINIMUM 6 PARTICIPANTS

9:00 AM – 9:45 AM

CODE: 146206-01

CODE: 146206-02

CODE: 146206-03

CODE: 146206-04

JANUARY 27 – MARCH 2 (MARCH 2 CLASS IN SILO)

APRIL 6 – MAY 11

JUNE 8 – JULY 20 (NO CLASS JUNE 29)

AUGUST 3 – SEPTEMBER 21 (NO CLASS ON 8/31/24 9/7/24)





JUST JAMMIN' WITH JANELLE COMPANY

Join Janelle to learn the newest line dances and visit some of those oldies that you thought were forgotten. This is a great opportunity to have fun, boost your metabolism, and dance with your friends! See you there!

The Bradford Barn Main Barn Room (Adults Only)

\$54 Non-Resident Rate

\$43 Discounted Resident Rate

Instructor: Janelle McGhee

Minimum 8 participants

Saturdays 10:00 am – 11:00 am

Code: 142206

January 13 - February 24 (no class February 17)

Code: 142206

March 9 – April 27 (no class March 2 & 30, April 13)

Code: 142206

May 4 – June 15 (no class June 1)

Code: 142206

June 22 – August 3 (no class June 29)

TAI CHI & QIGONG

Our wonderful treasure, Master Teacher, Anpu Mfundishi, with over 47 years of practice and experience is certified by the Martial Arts Research Society and teaches both Qigong and Tai Chi classes.

Five Organ Chi Kung (Qigong) is set of basic postures and principles for quality meridian stimulation. It is a foundation for a 72 posture Tai Chi Chuan form. Working this Chi Kung set in addition of post and moving postures will provide and generate an increase in intrinsic energy and circulatory development. You will become stronger and improve memory.

The Bradford Barn Main Barn Room (Adults Only)

Mondays 6:00 pm – 7:00 pm

Thursdays 9:00 am – 10:00 am

\$67 six-week class

Instructor: Master Teacher, Anpu Mfundishi

Minimum 6 participants

MONDAYS

Code: 156005-01 January 29 – March 11

Code: 156005-02 March 25 – April 29

Code: 156005-03 May 9 – June 17

Code: 156005-04 June 24 – July 29

THURSDAYS

Code: 156004-01 February 15 - March 21

Code: 156004-02 March 28 – May 2

Code: 156004-03 May 9 – June 13

Code: 156004-04 June 20 - August 1 (no class July 4)



COMMUNITY GARDEN

7

Yum! Grow your own vegetables this summer! Rent a bare plot for just \$30 per plot. Plant, harvest and serve the freshest produce to your family this summer. For rules and information, stop by or contact us at 708-481-7313 ext. 221

Garden plots are available to rent!

April 1 – October 31, 2023

(weather permitting)

\$30 per plot (resident & non-resident)

Code: 810009-03

***No refund for canceled plots during current season**



WATERCOLORS PAINTING

Whether you are a beginner or have already dabbled in this medium, come and celebrate watercolor with our popular art teacher, Sandee Theisen. You will explore such techniques as wet in wet, dry brush, mixed media, sepia, and color therapy. Paint subjects range from nature themes and landscapes to still life interiors. A supply list will be furnished at registration.

Adults

The Bradford Barn Main Barn Room

\$68 Non-resident Rate

\$50 Discounted Resident Rate

Instructor: Sandee Theisen

Minimum 6 participants

9:00 am – 11:15 am



Code: 141202-01

February 6 – March 12

Code: 141202-02

March 26 – April 30 (no class March 19 election day)

Code: 141202-03

May 7 – June 11

Code: 141202-04

June 18 – July 23

BRUSHES & BOTTLES

Have fun with watercolors. All materials included. Bring your own snacks and beverages.

\$35 a person 6:30-9pm

- Friday, March 22
- Friday, April 19
- Friday, May 10
- Friday, June 21
- Friday, August 9

MAH JONGG FOR FUN!

**THURSDAYS
MAH JONGG
12PM-3:45PM
FREE**

Please register at least 3 days before class

COMMUNITY GARAGE SALE IN THE PARK

All Ages (children must be accompanied by an adult)

Sgt. Means Park, Barn or Pavilion

Saturday, May 4th 2024

9:00 am – 1:00 pm

\$14 Non-Resident Rate

\$10 Discounted Resident Rate

\$20 Business Vendors

Code: 200001-02



COMMUNITY SHRED & ELECTRONIC RECYCLING DAY

All Ages (children must be accompanied by adult)

Sgt. Means Park Parking Lot

Saturday, TBA

9:30 am – 11:30 am

Free from Cook County Sheriff they come and collect and shred off site

FREE

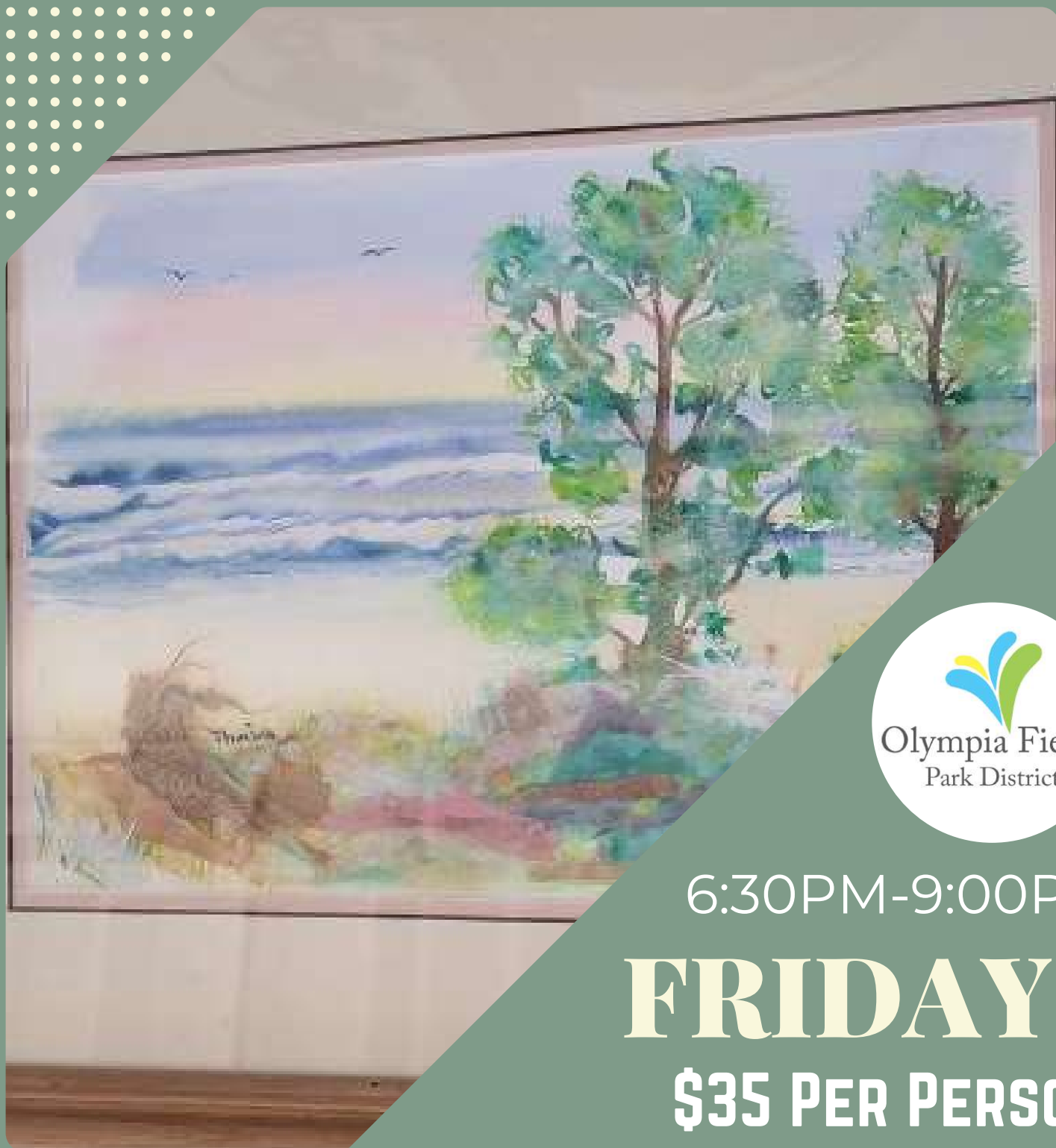
**MEDICATION
TURN IN**



PAINT & SIP

BRUSHES

AND BOTTLES



6:30PM-9:00PM

FRIDAYS

\$35 PER PERSON

Happy Easter

EASTER BUNNY DRIVE THRU



Friday, March 29
9am – 1pm
\$10 per child

Easter Bunny and helpers will stop at the end of your driveway and exit our vehicle for a brief hello. This is offered participants in the vicinity of Olympia Fields.

Let us know your time preference, your address, email, phone and the name(s) of the people we are visiting.

Email jennifer@ofparks.org or
call 708-481-7313 ext. 225 to RSVP

SENIOR VAN TRIPS

Quigley's Irish Pub

Naperville, IL

Friday, March 15

10am – 3pm

\$27 per person (transportation)

Quigley's Irish Pub invites you to experience the warm and inviting atmosphere nestled in the heart of the Jefferson Hill Shops. As you step into our charming pub, you'll be greeted by the rich ambiance of Irish hospitality combined with the unique character of Jefferson Hill.



Jiang Niu BBQ House

Chinatown

Thursday, April 18

10am-3:30pm

\$30 per person (transportation only & parking)

We will enjoy one of a kind Asian fusion BBQ with made in house sauces, marinades, soups, and seasonings come from the freshest natural ingredients. We will use the smokeless grills built into the table so we may grill our own meal. Each person will pay for their all you can eat meal \$27.99



The Berghoff Restaurant,

Chicago, IL

\$30 transportation & parking

Wednesday, May 8th

10:30am – 3:00pm

The Berghoff stands as a rare gem in America's restaurant industry, proudly maintaining its distinction as a 100% family-owned and family-operated establishment for over 124 years. Rooted in tradition and steeped in history, our commitment to excellence has been passed down through generations, creating a dining experience that transcends time.



OLYMPIA FIELDS PARK DISTRICT PRESENTS

Niagara Falls, USA



INCREDIBLE PRICE INCLUDES:

- ♦ Motorcoach transportation
- ♦ 6 nights lodging including 4 consecutive nights in the Niagara Falls, NY area
- ♦ 10 meals: 6 breakfasts and 4 dinners
- ♦ GUIDED TOUR of NIAGARA FALLS, NY
- ♦ A Journey to The Falls on "MAID OF THE MIST"
- ♦ Enjoy a CRUISE on the ERIE CANAL
- ♦ Take a SCENIC DRIVE through WINE COUNTRY
- ♦ GUIDED TOUR of BUFFALO
- ♦ Visit to the BUFFALO TRANSPORTATION PIERCE ARROW MUSEUM

For more pictures, video, and information visit:
www.GroupTrips.com/OlympiaFieldsParkDistrict

\$995*

7 Days 6 Nights

*PER PERSON, DOUBLE OCCUPANCY

(Sun - Sat)
 Sep 29 - Oct 5
 2024

Departure: Olympia Fields, IL @ 8 am

Day 1: Depart your group's location in a spacious, video and restroom equipped motorcoach as you head for your destination: captivating, awe-inspiring Niagara Falls, USA! This evening, you will check into an en route hotel and relax for the evening.

Day 2: Enjoy a Continental Breakfast before continuing towards your destination. Later, enjoy a relaxing Dinner and check into your Niagara Falls, NY area hotel for a four night stay.

Day 3: Start the day with a Continental Breakfast before you go on a cruise aboard the MAID OF THE MIST and enjoy a closer view of the Falls. Next you will depart for a GUIDED TOUR of NIAGARA FALLS, NY. You will experience a spectacular view of the gorge from the Observation Tower and your guide will show you some of the best viewpoints in Niagara State Park. On the American side of the Falls you are so close to the river you can practically touch it. This evening, after Dinner at a local restaurant, enjoy a view of the Falls from Goat Island.

Day 4: After a Continental Breakfast, journey to Lockport to experience a CRUISE on the ERIE CANAL. This fun and informative cruise will take you past five of the original 1800's locks. Have lunch on your own in charming Lewiston, NY home of the Freedom Crossing Monument and another lovely view of the mighty Niagara River. This afternoon, take a scenic drive through the Wine Country and stop at a local winery for a tasting. Later tonight, you'll enjoy Dinner with Entertainment.

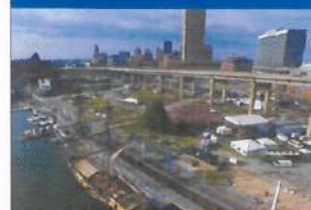
Day 5: Enjoy a Continental Breakfast before you head to Buffalo, NY. Upon arrival, enjoy a GUIDED TOUR of BUFFALO, once one of the richest cities in America, as well as, home to the World's Fair in 1901 and two Presidents. You will go to the Canalside area, which is at the heart of downtown Buffalo's waterfront revitalization area and visit the BUFFALO TRANSPORTATION PIERCE ARROW MUSEUM. Get a glimpse of the finest vintage automobiles, see a reproduction of a Frank Lloyd Wright Filling Station, and tour exhibits like "Women and Automobiles" which showcase memorabilia from the golden age of touring. This evening, enjoy Dinner at a local restaurant, before you return to your hotel for a good night's rest.

Day 6: Enjoy a Continental Breakfast before leaving for the Erie Maritime Museum. This evening, relax at your en route hotel.

Day 7: Today after enjoying a Continental Breakfast, you depart for home... a time to chat with your friends about all the fun things you've done, the great sights you've seen and where your next group trip will take you!



World's most famous Falls



Visit to Buffalo's Canalside



Experience a Majestic View of the Falls



Enjoy a Cruise along the Erie Canal

ADD PEACE OF MIND TO YOUR TRIP...

With Diamond Tours Exclusive Travel Confident® Protection Plan.
 See separate advertisement...

\$75 Due Upon Signing. *Price per person, based on double occupancy. Add \$234 for single occupancy.
 Final Payment Due: 7/22/2024

FOR INFORMATION & RESERVATIONS CONTACT:

Jennifer Braun-Denton @ (708) 481-7313 Ext. 221

OLYMPIA FIELDS PARK DISTRICT PRESENTS

Garden of the Gods, the Royal Gorge & Colorado Springs



INCREDIBLE PRICE INCLUDES:

- ♦ Motorcoach transportation
- ♦ 8 nights lodging including 4 consecutive nights in scenic Colorado
- ♦ 14 meals: 8 breakfasts and 6 dinners
- ♦ Tour of the GARDEN OF THE GODS
- ♦ Visit to the UNITED STATES AIR FORCE ACADEMY
- ♦ Visit the Royal Gorge, including Bridge & Aerial Tram
- ♦ Visit HISTORIC MANITOU SPRINGS at the foot of famous PIKES PEAK
- ♦ Guided Tour of COLORADO SPRINGS
- ♦ Visit the U.S. OLYMPIC & PARALYMPIC MUSEUM

For more pictures, video, and information visit:
www.GroupTrips.com/OlympiaFieldsParkDistrict

\$1349*

9 Days 8 Nights

*PER PERSON, DOUBLE OCCUPANCY

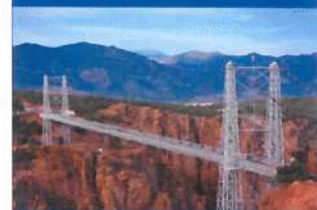
(Sat - Sun)
 Jun 1 - 9
 2024



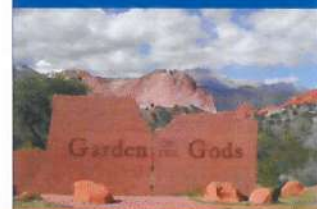
Visit to the U.S. Air Force Academy



Famous Pikes Peak - America's Mountain



Visit to the Royal Gorge Bridge and Park



See the Garden of the Gods

Departure: Olympia Fields, IL @ 8 am

Day 1: Depart your group's location in a spacious, video and restroom equipped Motorcoach as you head for your destination: spectacular Colorado! This evening, you will check into an en route hotel.

Day 2: After enjoying a Continental Breakfast, you will depart for the Mormon Trail Center at Historic Winter Quarters in Omaha, NE. Later in the day, enjoy Dinner and check into your en route hotel.

Day 3: Enjoy a Continental Breakfast before continuing towards your destination. Later, enjoy a relaxing Dinner and check into your Colorado Springs area hotel for four nights.

Day 4: Start the day with a Continental Breakfast before heading for a visit to HISTORIC MANITOU SPRINGS located at the foot of famous PIKES PEAK, a town rich in history and surrounded by beautiful Rocky Mountain scenery. While there, taste the spring waters that made Manitou famous and enjoy lunch on your own. Then you will depart for guided tour of GARDEN OF THE GODS, the magnificent park of red sandstone formations, a spiritual retreat of ancient peoples. This, evening, enjoy Dinner at a local restaurant.

Day 5: After a Continental Breakfast, depart with your guide for a guided tour of Colorado Springs. You will enjoy a visit to the U.S. OLYMPIC & PARALYMPIC MUSEUM. Journey through the 60,000 square foot interactive museum that is dedicated to these exceptional competitors. Experience their compelling stories, with the artifacts, media and technology behind the athletes who make the United States proud. Then, you'll depart with your guide to the impressive UNITED STATES AIR FORCE ACADEMY. You will see the Academy displays and a movie. Tonight, enjoy Dinner at a local restaurant.

Day 6: After enjoying a Continental Breakfast, you will depart for COLORADO'S "NATURAL WONDER" - the ROYAL GORGE. At the Royal Gorge Bridge and Park, you will have an opportunity to view the breathtaking Gorge, cross the suspension bridge and ride the AERIAL TRAM. You will also have an opportunity to visit the Visitor Center or step back in time and explore the story of the Royal Gorge at the PLAZA THEATER. Tonight, you will enjoy Dinner with Entertainment.

Day 7: Enjoy a Continental Breakfast before leaving for the Buffalo Bill Ranch State Historical Park in North Platte, NE. Later that day, after a relaxing Dinner, you'll check into your en route hotel.

Day 8: After enjoying a Continental Breakfast, you will depart for the University of Nebraska State Museum in Lincoln, NE. Tonight, relax in your en route hotel.

Day 9: Today after enjoying a Continental Breakfast, you depart for home... a perfect time to chat with your friends about all the fun things you've done, the great sights you've seen, and where your next group trip will take you!

ADD PEACE OF MIND TO YOUR TRIP...

With Diamond Tours Exclusive Travel Confident® Protection Plan.
 See separate advertisement...

\$75 Due Upon Signing. *Price per person, based on double occupancy. Add \$475 for single occupancy.
 Final Payment Due: 3/25/2024

FOR INFORMATION & RESERVATIONS CONTACT:

Jennifer Braun-Denton @ (708) 481-7313 Ext. 221

OLYMPIA FIELDS PARK DISTRICT PRESENTS

Branson Show Extravaganza



INCREDIBLE PRICE INCLUDES:

- ♦ Motorcoach transportation
- ♦ 4 nights lodging in the Branson area
- ♦ 8 meals: 4 breakfasts and 4 dinners
- ♦ Admission to 6 Fabulous Shows! Including:
- ♦ Three Morning Shows: DALENA DITTO'S COUNTRY EVOLUTION, DOUG GABRIEL MORNING SHOW & A NEIL DIAMOND TRIBUTE SHOW
- ♦ Three Evening Shows: THE HAYGOODS CHRISTMAS SHOW, HUGHES BROTHERS CHRISTMAS SHOW & LAUGH YOUR YAK-OFF CHRISTMAS SHOW featuring YAKOV SMIRNOFF

For more pictures, video, and information visit:
www.GroupTrips.com/OlympiaFieldsParkDistrict

\$850*

5 Days 4 Nights

*PER PERSON, DOUBLE OCCUPANCY

(Mon - Fri)
 Nov 11 - 15
 2024



**HUGHES BROTHERS
 CHRISTMAS SHOW**



**A NEIL DIAMOND TRIBUTE
 SHOW**



**LAUGH YOUR YAK-OFF
 CHRISTMAS SHOW
 featuring YAKOV SMIRNOFF**



**THE HAYGOODS CHRISTMAS
 SHOW**

Departure: Olympia Fields, IL @ 8 am

Day 1: Board your spacious, video and restroom equipped Motorcoach and set off for the "Live Music Show Capital of the World" - Branson, Missouri. This evening you'll enjoy Dinner and check into your Branson area hotel for a four night stay.

Day 2: Today, after a Continental Breakfast, you'll experience DALENA DITTO'S COUNTRY EVOLUTION. This show takes you back through the humble beginnings where Country Music began and brings you up to date on the incredible lives of those singers and songwriters who pour their heart and soul into telling the American story. Join Dalena Ditto and her Live band "The Boys" and see what people of all ages are loving about this new show. Next, visit HISTORIC DOWNTOWN BRANSON, with old-fashioned charm, novelty shops, and restaurants. After Dinner, you will be dazzled by THE HAYGOODS CHRISTMAS SHOW. All you favorite Christmas Songs are presented with the Joy and Magic of the Season as only the Haygoods can perform them! This is an amazing experience you don't want to miss!

Day 3: Enjoy a Continental Breakfast, you'll start your day with the DOUG GABRIEL MORNING SHOW. This good, clean, family show has lots of variety. It has a talented cast, rib-tickling comedy and a terrific ensemble of musicians. Plus, Doug plays his World Famous Mufftar (a guitar made out of a 1969 Thunderbird muffler)!!! Later, you'll have some free time for shopping. After Dinner, you'll take in the HUGHES BROTHERS CHRISTMAS SHOW. The Hughes Brothers and family transport you to a Christmas Wonderland filled with the season's best vocal harmonies, exciting dances, inspiring instrumentals, and of course, the enchantment and light-hearted humor. Along with all the festive surprises and treasured family traditions, see Santa in a new light when he explains the symbols of Christmas in the most moving Christmas presentation.

Day 4: Enjoy a Continental Breakfast and then start your day with A NEIL DIAMOND TRIBUTE SHOW. This Broadway style production is designed and produced to appeal to everyone of all ages. Be prepared to take a journey that will leave you amazed. Then, you will go to BRANSON LANDING and discover waterfront shopping, dining, and attractions on Lake Taneycomo's beautiful waterfront. After Dinner, you'll take in the LAUGH YOUR YAK-OFF CHRISTMAS SHOW featuring YAKOV SMIRNOFF. You will enjoy Yakov's insightful and laughter-filled philosophy on life, love, family, and country. New York Times called his one man show, "warm-hearted, delightful and splendidly funny."

Day 5: After enjoying a Continental Breakfast, you'll depart for home... a time to chat with your friends about all the fun things you've done, the great shows you've seen, and where your next group trip will take you!

ADD PEACE OF MIND TO YOUR TRIP...

With Diamond Tours Exclusive Travel Confident® Protection Plan.
 See separate advertisement...

\$75 Due Upon Signing. *Price per person, based on double occupancy. Add \$135 for single occupancy.
 Final Payment Due: 9/4/2024

FOR INFORMATION & RESERVATIONS CONTACT:

Jennifer Braun-Denton @ (708) 481-7313 Ext. 221

with the Travel Confident® Protection Plan!

Travel Protection - Same Price - Regardless of Age!

PLAN BENEFITS INCLUDE:

Trip Cancellation¹: You are covered for your **your unused, prepaid, non-refundable trip costs** in the event you must cancel your trip for a covered reason, such as one of the reasons below.

Trip Interruption¹: This covers the unused portions of your land or water travel arrangements, plus the additional transportation costs paid, if you must interrupt your trip due to a covered reason, such as the following:

Sickness, Injury or Death to you, a traveling companion, a family member, or a business partner

Jury Duty or being required to appear as a witness in a legal action

A Strike that causes your common carrier to cease operations for at least 18 hours

Losing Your Job where you have worked for at least 1 year

Terrorist Attack or Hijack

Inclement Weather that causes your common carrier to cease operations for at least 18 hours

Natural Disaster or Burglary that causes your home to become uninhabitable

Getting into a Traffic Accident on your way to your trip's departure point

¹ Please note that the covered reasons for Trip Cancellation coverage are not identical to the covered reasons for Trip Interruption coverage, and additional terms apply to all covered reasons.

You are covered for the "single supplement" surcharge if your roommate cancels or interrupts for one of the above reasons.

**EASY SIGNUP!
ONLINE**

www.TravelConfident.com

**QUESTIONS?
CALL 1-855-376-2037**

Trip Cost (per person)		Travel Confident® Cost (per person)
Up to \$500	=	\$38
\$501 - \$600	=	\$48
\$601 - \$700	=	\$62
\$701 - \$1,100	=	\$72
\$1,101 - \$1,500	=	\$96
\$1,501 - \$2,000	=	\$132

RECEIVE THIS BENEFIT!

ACT NOW so you are eligible for a **PRE-EXISTING CONDITION** waiver!
You must purchase the travel protection plan within **14 days** of the date of your initial payment or deposit.

Review the complete terms in the exclusion section of your plan document.

Baggage and Personal Effects - Up to a maximum of \$1,000! If your baggage is lost, stolen or damaged!

Medical Expense - Up to a maximum of \$5,000! If you are injured or become ill on the trip. You also are covered for up to \$750 in emergency dental treatment.

Medical Evacuation and Repatriation of Remains - Up to a maximum of \$20,000! Should a severe illness require immediate care and a local hospital cannot meet your needs, this covers the cost to transport you to the nearest hospital where you can receive appropriate treatment. A toll-free call to 1-800-494-9907 starts the arrangements. If you are traveling alone, you are also covered for the air fare of a companion to join you at the hospital (additional terms apply).

24/7 Non-Insurance Assistance Services Included: Lost Baggage Retrieval • Prescription Drug/Eyeglass Replacement • Medical or Legal Referrals • Emergency Cash Advance • Translation Services • Payment to the Assistance Company is Your Responsibility.

** TIPS FOR TRAVELERS **

- Cancel with your Group Leader as soon as you are aware of the need to cancel.
- In the event you need to file a claim, contact Travel Insured International at 1-855-376-2037 as soon as possible. Be prepared to provide proof of payments for all portions of your trip, including the travel protection plan.
- Get detailed medical statements from treating physicians where and when an accident or sickness occurred. Save your receipts, proof of all payments and proof of coverage.
- If you have purchased the Travel Confident Protection Plan, for medical evacuation call the Assistance Company at 1-800-494-9907 or collect at 1-603-328-1707. Be sure to call before you incur any expenses!

* This page contains highlights of the plans, which include travel insurance coverages underwritten by United States Fire Insurance Company under form series T7000 et. al., T210 et. al. and TP-401 et. al. The Crum & Forster group of companies is rated A (Excellent) by AM Best 2022. C&F and Crum & Forster are registered trademarks of United States Fire Insurance Company. The plans also contain noninsurance Travel Assistance Services provided by C&F Services through Active Claims Management (2018) Inc., operating as "Active Care Management", "ACM", "Global Excel Management", and/or "Global Excel". Coverages may vary and not all coverage is available in all jurisdictions. Insurance coverages are subject to the terms, limitations and exclusions in the plan, including an exclusion for pre-existing conditions. In most states, your travel retailer is not a licensed insurance producer/agent, and is not qualified or authorized to answer technical questions about the terms, benefits, exclusions, and conditions of the insurance offered or to evaluate the adequacy of your existing insurance coverage. Your travel retailer may provide general information about the plans offered, including a description of the coverage and price. The purchase of travel insurance is not required in order to purchase any other product or service from your travel retailer. Your travel retailer may be compensated for the purchase of a plan. CA DOI toll free number: 800-927-4357. The cost of your plan is for the entire plan, which consists of both insurance and non-insurance components. Individuals looking to obtain additional information regarding the features and pricing of each travel plan component, please contact Travel Insured: P.O. Box 6503, Glastonbury, CT 06033; 855-752-8303; customercare@travelinsured.com; California license #0H13223.

For Exclusions Please See Reverse Side

Unless otherwise shown below, these exclusions apply to You, Your Traveling Companion, or Family Member scheduled and booked to travel with You.

The following exclusion(s) appl(y)(ies) to the Trip Cancellation and Trip Interruption and Medical Expense.

We will not pay for any loss or expense caused due to, arising or resulting from:

1. a Pre-Existing Medical Condition, as defined in the certificate.

The following exclusions apply to the Medical and Dental Expense benefits.

We will not pay for any loss or expense caused due to, arising or resulting from:

1. routine physical examinations or routine dental care;
2. traveling for the purpose or intent of securing medical treatment or advice;
3. Alcohol or substance abuse or treatment for the same;
4. Normal pregnancy (except Complications of Pregnancy) or childbirth, or elective abortion;
5. a Mental, Nervous or Psychological Condition or Disorder unless Hospitalized or Partially Hospitalized while the certificate is in effect;
6. Your participation in Adventure or Extreme Activities, riding or driving in races, or participation in speed or endurance competition or events, except as a spectator;
7. Your participation in an organized athletic or sporting competition, contest, or stunt under contract in exchange for an agreed-upon salary or compensation. This does not include athletes participating in exchange for a scholarship or tuition.

In addition to any applicable benefit-specific exclusion, the following general exclusions apply to all losses and all benefits.

We will not pay for any loss or expense caused due to, arising or resulting from:

1. suicide, attempted suicide or any intentionally self-inflicted injury of You, a Traveling Companion, Family Member or Business Partner booked and scheduled to travel with You, while sane or insane;
2. being under the influence of drugs or narcotics, unless administered upon the advice of a Physician as prescribed;
3. activities, losses, or claims involving or resulting from possession, production, processing, sale, or use of marijuana, illegal drugs, alcohol or substances are excluded from coverage;
4. war or act of war, including invasion, acts of foreign enemies, hostilities between nations (whether declared or undeclared), or civil war;
5. the commission of or attempt to commit a felony or being engaged in an illegal occupation by You, a Traveling Companion, Family Member, or Business Partner;
6. directly or indirectly, the actual, alleged or threatened use, discharge, dispersal, seepage, migration, escape, release or exposure to any hazardous biological, chemical, nuclear radioactive weapon, device, material, gas, matter or contamination;
7. piloting or learning to pilot or acting as a member of the crew of any aircraft;
8. a loss or damage caused by detention, confiscation or destruction by customs;

The plan also contains exclusions specific to the Baggage and Personal Effects Benefits.

MEDICALLY FIT TO TRAVEL EXCLUSION:

We will not pay any expense as a result of You having been advised in writing that You, Your Traveling Companion, or Family Member scheduled and booked to travel with You are not Medically Fit to Travel at the time of purchase of coverage for a Trip, as defined in the certificate.

If coverage for a Trip is purchased and it is later determined that You, Your Traveling Companion, or Family Member scheduled and booked to travel with You were not Medically Fit to Travel at the time of purchase of coverage for Your Trip, as defined in the certificate, the coverage is void and premium paid will be returned.

Keep doing the things you love.

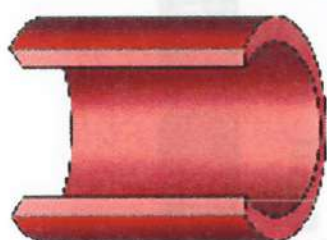
Catch health problems before they go too far.

Life Line Screening offers a 4-screening package to provide peace of mind or early detection for risks of stroke and cardiovascular disease.

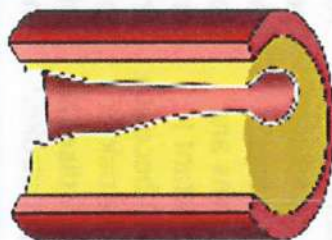
The combination of these tests helps detect problems—before you have symptoms and while you and your doctor can still take action...so you can keep doing the things you love.



Plaque buildup can lead to cardiovascular disease, stroke and aneurysms.



A normal artery allows blood to flow through easily.



Plaque buildup in the arteries reduces your blood flow and can be dangerous if left untreated.

Register now to check the health of your arteries

4 Important Screenings for Only \$149 (Special Package Pricing)

- Carotid Artery Disease
- Peripheral Arterial Disease (PAD)
- Abdominal Aortic Aneurysm (AAA)
- Atrial Fibrillation (AFib)

**Join the 10 million people who have been screened.
We are coming to your neighborhood.**

When: Thursday, March 7th, 2024

Where: Olympia Fields Park District - The Bradford Barn-Olympia Fields, IL

To register for your appointment and to receive the special discount, please call toll-free **877-792-8479** or visit **LLSA.SOCIAL/HC**

Scan here



Screening results are provided to you in about 14 days. We direct all participants with abnormal results to take the report to their physician. Appropriate modification of risk factors (including high blood pressure, smoking, heart disease, diabetes and poor diet) is also necessary for cardiovascular disease prevention. Our screenings cannot detect all forms of stroke risk or cardiovascular disease. All tests are for screening purposes only. You should consult with your personal physician regarding your screening results. Price does not include any applicable review fees. Insurance Note: Life Line Screening does not participate in the Medicare program and the cost of our screening services is not covered or reimbursable by Medicare. Life Line Screening does not file insurance claims nor provide referrals to any physician's group or hospital. If you are unable to attend the screening for any reason whatsoever, we will issue a gift card for the full amount to be used by you or anyone you choose for future screening services.



Olympia Fields Park District - The Bradford Barn Thursday, March 7th, 2024

All 4 Screenings for \$149

Carotid Artery Disease: An ultrasound is performed to screen the carotid arteries (a pair of blood vessels in the neck that deliver blood to your brain) for buildup of fatty plaque. This buildup, called atherosclerosis, is one of the leading causes of stroke.	Peripheral Arterial Disease (PAD): An Ankle-Brachial Index (ABI) test is performed using blood pressure cuffs on the arms and legs. It is important to screen for PAD because it increases the risk of coronary artery disease, heart attack, or stroke. ¹	Abdominal Aortic Aneurysm (AAA): An ultrasound is performed to screen the abdominal aorta for the presence of an enlargement or aneurysm. AAA can lead to a ruptured aortic artery, which is a life-threatening medical emergency.	Atrial Fibrillation : A 6-lead electrocardiogram (EKG) is performed by placing sensors on the arms and legs to screen for Atrial Fibrillation. AFib can lead to blood clots, stroke, and heart failure, and other heart-related complications. ²
---	---	--	---



- Call toll free: 1-844-591-7098
- LLSA.SOCIAL/HC
- Email

¹ No single screening can detect all risk factors for all conditions, such as and including the presence of coronary artery disease.

Pre-registration is required

OLYMPIA FIELDS PARK DISTRICT

ADOPT A PARK SIGN GARDEN PROGRAM

The Olympia Fields Park District's Adopt a Park Sign Garden Program is a volunteer program designed for citizens who wish to take an active role in the beautification of the Park District gardens around park signs. Groups or individuals are encouraged to take an active role in their neighborhood and community parks planting and maintaining flower gardens that surround the park signs. If you are interested in volunteering, contact Jesus Vargas 708-481-7313 x 226

Parks where volunteers are currently needed for 2024:

- Bicentennial Park
- The Trails Parks
- Arcadia Park
- Elliott Woods Park
- Spirit Trail Park

OLYMPIA FIELDS PARK DISTRICT

TREE & BENCH COMMEMORATIVE PROGRAM

Celebrate a special occasion, honor someone you hold dear or remember a loved one by donating a tree or bench. A tree or bench makes a lovely gift or memorial and also contributes to the beauty and variety of the park landscape.

A tree spreads its strength and beauty across the years to become a lasting recognition of remembrance. Trees will be planted either in the spring or fall of each year as weather permits, depending on the species of tree. Application deadline is March 1st for spring and September 1st for fall.

Benches require an 8-10 week lead time from the date of the initial order to final installation.

Ordering Information:

To order a tree or bench, please call the Olympia Fields Park District Maintenance Department at 708-481-7313, Jesus Vargas - ext. 226. We will assist you with the process of selecting a tree or bench, deciding on the wording for the plaque, and choosing a fitting location for your memorial.

"A man doesn't plant a tree for himself. He plants it for posterity."

....Alexander Smith

PARK RENTALS

PICNIC RENTALS

Picnic Rentals Picnic Area Rentals can be contracted and approved up to one year in advance!

SGT. MEANS PARK

- Located at 20712 Western Avenue on 23.6 acres
- 1 Covered Picnic Area
- 2 Open Picnic Areas
- 4 Tennis Courts
- 2 Soccer Fields
- 1 Baseball Field

BICENTENNIAL PARK

- Located at 203rd & Governor's Highway
- 1 Covered Picnic Area
- 3 Soccer Fields
- 2 Baseball Fields

PICNIC EQUIPMENT RENTAL

Picnic Kit - \$25 Rental Fee

Our Picnic Kit includes: 4 throw down bases, 2 Frisbees, 2 softball bats, 2-12" softballs, 2-16" softballs, 1 hard bat, 1 hard ball, 1 Wiffle ball bat, 1 Wiffle ball, 1 soccer ball, 1 playground ball, 1 volleyball, and 1 basketball.

In addition to the Picnic Kit, we have the following separate items available to rent for \$5 each:

- Frisbee
- Horseshoes
- Bocce Balls
- Baggo (Bean Bag Toss game)

GRILL RENTAL

\$25 Must provide your own charcoal.

Security Deposit: \$50

Please call 708-481-7313 for details.

PARK RENTALS

PARK RENTALS

LEAGUE RENTALS

Looking for a home for your Softball, Soccer, Football, Tennis or Frisbee Golf League?

We have just the place for you! Athletic field rentals at Sgt. Means Park and Bicentennial Park.

\$35 per Game / Non-resident

\$25 per Game / Discounted resident rate

Security deposit \$100

HOME OWNER ASSOCIATION

Olympia Fields Park District Home Owner Associations Rent Bicentennial or Sgt. Means Park Picnic Areas free for your yearly picnics. Deposits and other applicable rules and fees may apply.



PARK RENTALS

PARK RENTALS

RENTAL FEES AND SECURITY DEPOSIT INFORMATION

The following rates apply regardless of weather conditions. No refunds will be given based on weather conditions. Max of 8 Hour Picnic Park Rentals.

BICENTENNIAL PARK

# of Guests	Resident	Non-Resident
1-10	\$30*	\$60*
11-60	\$85*	\$170*
61-100 max	\$110*	\$220*

SGT. MEANS PARK (PER PICNIC GROVE) LIMIT 60

# of Guests	Resident	Non-Resident
1-10	\$30*	\$60*
11-60	\$85*	\$170*
61-100 max	\$110*	\$220*

ARCADIA PARK (NO ALCOHOL ALLOWED)

# of Guests	Resident	Non-Resident
1-10	\$30*	\$60*
11-60	\$85*	\$170*

**Requires a \$100 security deposit*

Alcoholic Permit and Liability Fees \$225 - Non-refundable

Refunds available within 30 days of event. Checks to be picked up in office.

All cancellations must be in writing to the park district 60 days prior to the rental date. Otherwise, the security deposit will be forfeited. In case of cancellation, a processing charge of 50% of deposit will be retained if more than 60 days from rental date. Less than 60 days you will forfeit deposits.

Teen parties or large groups require additional security fees. All outdoor rentals that will have 100 or more attendees must be approved by the park board.

No park water usage. No water slides.
Inflatables must be approved. Must rent own generator.

No amplified music (including DJs) allowed in any park.

Additional rental fees may apply depending on type of entertainment and/or rental equipment. Other rules and regulations apply. Please contact our office for further details.

Rentals less than 60 days away must be paid in full. Payments accepted for rentals less than 60 days from event must be made by credit card, money order or cash. Call office for further details.

PARK RENTALS

TOLENTINE PARK RENTALS

PICNIC RENTAL

Picnic area and tables until dusk
 1 - 60 Guests
 \$220 Non-Resident Rate
 \$110 Discounted Resident Rate
 \$100 Security Deposit



FOR SCHOOLS, CAMPS, AND DAYCARES ONLY

Splash Pad can accommodate Schools, Camps, and Daycares at a discounted rate:
 \$150 for 90 minutes
 \$50 security deposit (same rules apply)
 *Schools camps and daycares can only rent from 10:00am-11:30pm Monday - Friday

MAX 8 HOUR PICNIC PARK RENTALS.

Alcoholic Permit and Liability Fees \$225 - Non-refundable

****No barbecuing at this park location. No Inflatables****

Rentals less than 60 days away must be paid in full. Payments accepted for rentals less than 60 days from event must be made by credit card, money order, or cash. Call office for further details.

All cancellations must be in writing to the park district 60 days prior to the rental date. Otherwise, the security deposit will be forfeited. In case of cancellation, a processing charge of 50% will be retained if more than 60 days from rental date.

Refunds for security deposit available within 30 days of event. Rental groups must vacate when the splash pad is open to the public.

All park rental rules and regulations apply. Additional rules and regulations may apply for Tolentine Park rentals. Please contact Olympia Fields Park District for details.

Rentals must be booked at least 2 weeks in advance.
 Call 708-481-7313 to reserve the Splash Pad!

PARK RENTALS

DISC GOLF

25

Welcome to the Olympia Fields Park District's 18-hole disc golf course, a thrilling blend of precision and nature. Our course, nestled in the scenic Olympia Fields landscape, caters to players of all skill levels.

Experience the joy of disc golf as you navigate through a well-designed course that seamlessly integrates with the natural surroundings. Tall trees, manicured fairways, and strategic obstacles provide the right balance of challenge and enjoyment. Designed for both beginners and seasoned disc golfers, each hole offers a unique set of challenges, from narrow fairways to open spaces, along with elevation changes for added excitement.

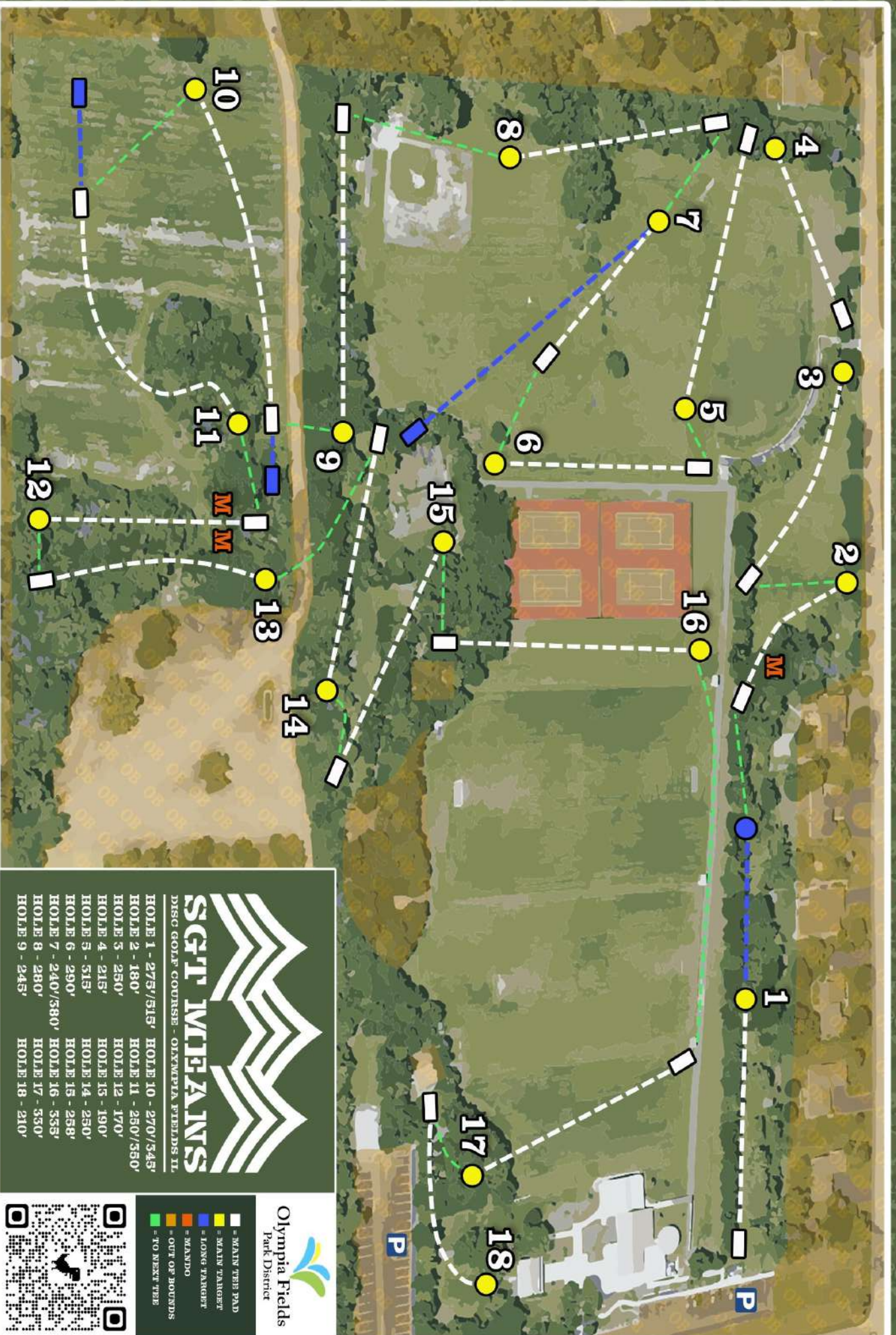
Take in the tranquility of the park as you progress through the course, with convenient benches and rest areas for a leisurely pace. Well-maintained baskets and clearly marked tee pads ensure a smooth and enjoyable round. Whether you're aiming for a birdie or conquering a tricky par, our 18 holes promise an unforgettable disc golf experience.

Discover the joy of disc golf at the Olympia Fields Park District's 18-hole course! A perfect opportunity to connect with nature, challenge yourself, and create lasting memories with friends and family.



**WE SELL DISC GOLF
FRISBEES IN THE OFFICE!**





the bradford barn

Whether you are planning a wedding, bridal shower, party, celebration, corporate retreat, workshop, retirement dinner, or an association meeting, our facilities can provide the perfect setting for you.

CULL HOUSE LIVING ROOM

Ideal for groups of up to 18 people.

SMALL RECREATION ROOM

Presentations for 8 to 24 people.

THE SILO

Ideal for groups of up to 40 people.

MAIN BARN ROOM

Ideal for groups of up to 128 people.

PAVILION

Ideal for groups of up to 150 people.

* Excludes Pavilion rental special 150 with bundle pricing only

TOURS, PRICING, AND RENTAL PACKAGES

Feel free to stop by at any time for a tour of the venue during office hours, you do not need to make any appointment!

Please contact Jennifer Denton at 708-481-7313 or jennifer@ofparks.org to schedule an appointment or for information about pricing and rental packages.



The Bradford Barn rental bundle includes:

- Venue set up
- Main Barn Room
- Pavilion (Open air) (Seasonal: May-Oct)
- Silo
- Catering Kitchen
- Loft for DJ
- Facility Attendant
- High boy tables (6) if desired
- White chairs, round tables, rectangle tables
- Access to audio equipment

4 hours minimum

12 hours maximum

(All Events must end by 12 A.M including decoration and cleanup)

We offer special wedding reception packages that include use of Main Barn Room (Ideal for groups of up to 120 people)., Outdoor Pavilion (Ideal for groups of up to 140 people during May - October), Silo Room, Catering Kitchen, Cull House living room (Bridal Suite).

Seasonal Bundle Rates (May -October)

Non-Resident Rates	Resident Rates
4 Hours: \$1560	4 Hours: \$1326
6 Hours: \$2340	6 Hours: \$1989
8 Hours: \$3120	8 Hours: \$2652
10 Hours: \$3900	10 Hours: \$3491
12 Hours: \$4680	12 Hours: \$3987

- \$500 Security Deposit in addition to bundle rates
- \$300 per hour outside of bundle hours listed.
- \$35 per hour OFPD Security Fee required for groups 99+ and teen parties 50+
- \$225 Alcohol Liability Insurance available.



Recreation Room
Individual Room Rate

Recreation Room can be used for:

- Seats 24
- Possible Groomsman Room
- Possible Coat room
- \$80 - Per Hour. Non-Resident Rate
- \$50 - Per Hour. Resident Rate
- \$100 additional security deposit



Silo Room
Individual Room Rate

Silo Room can be used for:

- Additional seating, buffet, photos.
- Wedding cake, dessert spread, baby shower, bridal shower
- Seats 40
- \$75 - Per Hour. Non-Resident Rate
- \$55 - Per Hour. Resident Rate
- \$100 additional security deposit



Pavilion
Individual Room Rate

Pavilion can be used for:

- Dance floor, Wedding ceremony or general events.
- \$225 - Per Hour Non-Resident Rate
- \$191.25 - Per Hour Resident Rate
- \$300 additional security deposit



Cull House
Individual Room rate

Cull House can be used for:

- Bridal Suite Photos
- Seats 14
- \$45 - Per Hour Non-Resident
- \$30 - Per Hour Resident Rate
- \$100 additional security deposit



Main Barn Room
Individual Room Rate

Main Barn can be used for:

- Seating capacity 125
- Seats 90 with room for dance floor
- \$225 - Per Hour. Non-Resident
- \$191.25 - Per Hour. Resident Rate
- \$300 additional security deposit



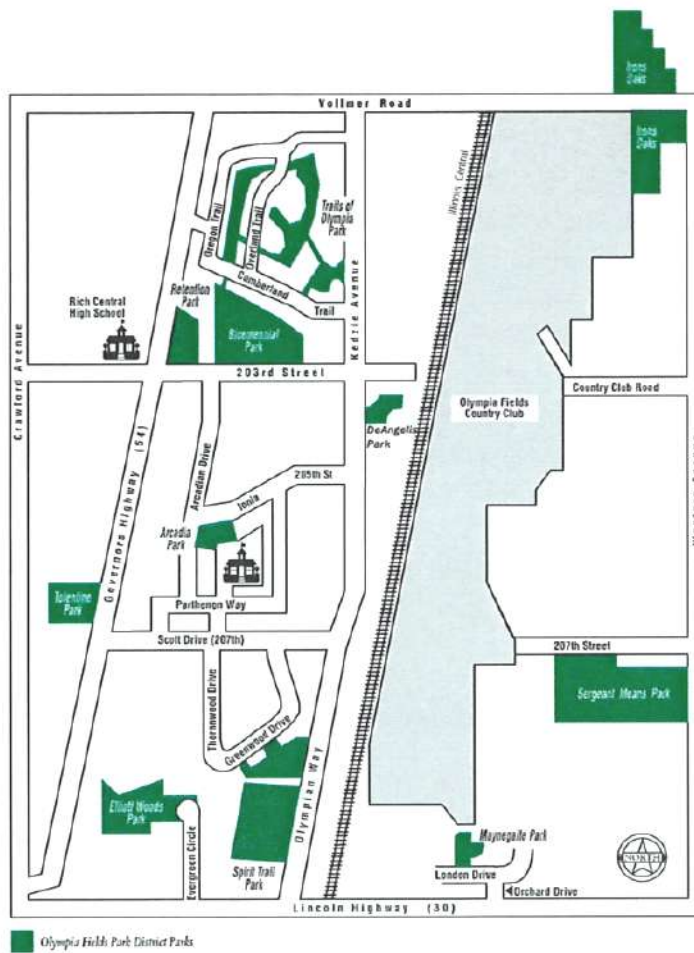
Catering Kitchen
Individual Room Rate

Catering Kitchen can be used for:

- Freezer
- Refrigerator
- Food warmer
- Microwave
- Ice Maker
- Kitchen is added to all indoor rentals FREE

THE BRADFORD BARN





	Acreage	Playground Apparatus	Athletic Fields	Picnic Areas	Sledding Hill	Tennis Courts	Basketball Court	Nature Area	Sitting Area	Bicycle Path	Disc Golf	Community Gardens	Meeting Facilities	Picnic Shelter	Concession Stand	Restrooms	Splash Pad
Arcadia Park Arcadian Drive	1.5	X	X	X	X				X								
Bicentennial Park 203rd and Governor's Hwy	14	X	X	X	X				X	X				X	X	X	
DeAngelis Park Kedzie Ave. & Metra Station	3.1								X	X							
Elliott Woods Park Evergreen Circle	6.8							X									
Irons Oaks Environmental Learning Center Western and Vollmer	40			X				X	X				X	X		X	
Maynegait Park Orchard and London Drive	4.2	X	X	X					X								
Sgt. Means Park 207th and Western Avenue	20	X	X	X	X	X	X	X	X	X	X		X	X		X	
Spirit Trail Park Kedzie Avenue	35.5							X									
Tolentine Park 207th and Governor's Hwy	10	X	X	X			X	X	X	X		X		X			X
Trails of Olympia North of Bicentennial Park	12.4								X	X							
Total Acres	144.7																

Registration Policies

1. Proof of residency (utility or tax bill) will be checked by the Park District staff upon registration.
2. Park District residents receive a discounted rate, as they pay taxes to the district. *(Graymoor residents are not considered residents. Their tax dollars go to a different district)*
3. Any applicant or participant may be required at any time to provide reasonable proof of age, residency, marital status or dependency.
4. You must complete the registration form and submit with full payment when registering for a program.
5. Registration is accepted at the Park District office (The Barn) located at: 20712 Western Avenue Olympia Fields, IL 60461
6. Online registration is available on the district website: www.ofparks.org.
7. Drop-Off Registration - You may use the white drop box located to the right of the mail box outside the Cull House. This box is accessible 24 hours a day.
8. Pre-registration is necessary for most Park District programs.
9. All registration is done on a first come, first served basis. No space will be reserved until the appropriate program fee is paid.
10. Payment is accepted in the form of: cash, check, money order or credit card (Visa or MasterCard). Please make checks payable to: Olympia Fields Park District.
11. A \$35 fee will be charged for any returned check. Only cash will be taken in place of the NSF check.
12. Checks which are not cashed within the 90 day timeframe and need to be reprinted, will be charged a \$20 administrative fee.
12. Checks which are not cashed within 90 day timeframe and need to be reprinted, will be charged a \$20 administrative fee.

13. Program Fees will not be prorated when registering for a program if the class session has already started or you cannot attend the class dates as listed.
14. Waiting lists will be formed when a class is full. Every attempt will be made to open an additional class.
15. Programs may be cancelled prior to the start date due to low enrollment. Refunds will be issued in the form of a check or return of charges to credit card used in the transaction within 30 days of request. All programs or rental refunds to be received in the form of a check will be written to the person whose name appears on the original registration/rental. Checks will be available by pick-up only, no checks will be sent through the mail. A refund in the form of a check will be available for pick up within 30 days.
16. It is mutually understood that a FAXED registration document (including waiver and release of all claims) shall substitute for and have the same legal effect as the original form. Our fax number is 708-481-8735. Payment is required to reserve a spot. This fax does not reserve you a spot until payment has been received.

Refund Policies

1. In the event a program, trip, or event is cancelled by the Park District, each registrant will be notified and a full refund will be issued and available for pick up within 30 days.
2. A \$5 administration fee will be assessed on all refund requests by the participant. Refund requests for all programs (excluding trips) must be requested prior to the second class meeting. Refunds will not be approved past the start of the second class meeting. Refunds will be ready for pick up within 30 days of request.
3. No refunds will be given for trips past the registration deadline date- unless there is a waiting list and someone can take the place from that waiting list.

GENERAL INFORMATION

BOARD OF COMMISSIONERS

- Deborah Robinson, President
- Trinette Britt-Johnson, Commissioner
- Lori Carlton-Jordan, Commissioner
- Steven Hurley, Commissioner
- Neil Pierce, Commissioner
- Eric Anderson, Attorney

ADMINISTRATIVE STAFF

- Jesus Vargas, Executive Director
- Jennifer Braun-Denton, Facilities Supervisor & Adult programs
- Beverly Meekins, Treasurer

BEHAVIOR POLICY

The Park District reserves the right to dismiss a participant from a program if their behavior or language is deemed inappropriate by staff, or if it prevents fellow participants from having the best experience possible.

LOOKING TO VOLUNTEER?

Several of our Park District programs have been successful due to the individuals who volunteer their time to assist us in the programs we offer. The Park District is looking for individuals to assist with programs and special events. If you would like to get involved, please stop by the Park District office and fill out a volunteer application. Please note for which programs/events you would like to volunteer.

ADA CONFORMITY

Olympia Fields Park District intends to comply with the intent and spirit of the Americans with Disabilities Act (ADA). If you require special accommodations, call the Park District at 708-481-7313 so that we can make necessary accommodations.

PARK DISTRICT OFFICE LOCATION

Sgt. Means Park, The Bradford Barn
20712 Western Avenue Olympia Fields,
Illinois 60461
708-481-7313 (phone)
708-481-8735 (fax)
www.ofparks.org

OFFICE HOURS

Monday - Friday: 9:00 am - 4:00 pm
Saturday: 9:00 am - Noon
Sunday: Closed

BOARD MEETING DATES

The Olympia Fields Park District Board of Park Commissioners meets the third Tuesday of each month at 6:00 pm.

EMERGENCY CLOSING INFORMATION

www.EmergencyClosings.com
(847) 238-1234

PHOTOGRAPHY POLICY

Olympia Fields Park District uses photographs in programs and special events to inform others of the many recreational opportunities available in our community. We do not use identification in our brochure. If you do not wish to have your picture taken, please inform the photographer. The Park District does not control newspaper photographers or others who may photograph program participants.

LOCAL ORGANIZATIONS

Enhancement Organization of Olympia Fields
Contact: Willett Hudson info@eoof.org

Park Forest Library
400 Lakewood Blvd. Park Forest, IL 60466
708-748-3731
www.pfpl.org

Olympia Fields Women's Club
Contact: Lola Prouix 708-481-8393

HF-Olympia Fields Soccer Club
708-802-4100
(general information and girls program)
708-802-2697
(boys program) www.hfsoccerclub.org

Office Closures

The office will be closed on the following dates:

- Monday, May 27, 2024 (*Memorial Day*)
- Monday, June 19, 2024 (*Juneteenth*)
- Tuesday, July 4 (*Independence Day*)
- Monday, September 2 (*Labor Day*)
- Monday, October 14 (*Columbus Day*)
- Thursday, November 28 – November 29 (*Thanksgiving Holiday*)
- Sunday, December 23 – December 26 (*Christmas Holiday*)
- Sunday, December 31 – January 1, 2025 (*New Year's Holiday*)
- Monday, January 16, 2025 (*Martin Luther King Day*)
- Monday, February 20, 2025 (*Presidents Day*)



Olympia Fields Park District
20712 Western Ave, Olympia Fields, IL 60461
[708] 481-7313
ofparks.org