

FALL & WINTER 2024/2025

OLYMPIA FIELDS PARK DISTRICT

EXPLORE NEW
ACTIVITIES THIS
FALL

SENIOR VAN TRIPS

- NAVY PIER
- FASHION OUTLETS MALL
- PAPERDUEX SEAFOOD KITCHEN
- TWELVE ISLANDS
- APPLE HOLLER

*Pages 14-15

DIY CRAFT NIGHTS

- TASSEL MIRROR
- CHUNKY KNIT PILLOW
- PAINTING WALL ART
- POM POM WREATH

*Page 6



*Page 11

THE POLAR
EXPRESS
STORYTIME



ZUMBA – SATURDAY WITH LISA

As we age, exercise continues to be of critical importance to weight management, heart health, Balance, and injury prevention. ZUMBA falls under the category of endurance training, which keeps the heart healthy and the circulatory system strong. ZUMBA develops coordination and burns calories to stave off the weight gain that often accompanies aging.

The Bradford Barn Main Barn Room

Ages 13 and older

\$47 Non-Resident Rate

\$38 Discounted Resident Rate

Instructor: Lisa McNeil

Minimum 6 participants

9:00 am – 10:00 am



Code: 1246206

Aug 3 – Sept 21 (NO CLASS 8/31 & 9/7)

Code: 246206-01

Oct 5 – Nov 16 (NO CLASS 10/12)

JUST JAMMIN' WITH JANELLE COMPANY

Join Janelle to learn the newest line dances and visit some of those oldies that you thought were forgotten. This is a great opportunity to have fun, boost your metabolism, and dance with your friends! See you there!

The Bradford Barn Main Barn Room (Adults Only)

\$54 Non-Resident Rate

\$43 Discounted Resident Rate

Instructor: Janelle McGhee

Minimum 8 participants

Saturdays 10:00 am – 11:00 am

Code: 242206

Sept. 14 – November 2 (NO CLASS 9/28 & 10/12)

Code: 242206

Nov. 16 – Dec. 14 (NO CLASS 11/30)

TAI CHI & QIGONG

Our wonderful treasure, Master Teacher, Anpu Mfundishi, with over 47 years of practice and experience is certified by the Martial Arts Research Society and teaches both Qigong and Tai Chi classes.

Five Organ Chi Kung (Qigong) is set of basic postures and principles for quality meridian stimulation. It is a foundation for a 72 posture Tai Chi Chuan form. Working this Chi Kung set in addition of post and moving postures will provide and generate an increase in intrinsic energy and circulatory development. You will become stronger and improve memory.

The Bradford Barn Rec Room

Mondays 6:00 pm – 7:00 pm Thursdays 9:00 am – 10:00 am

\$67 Discounted Resident Rate

Instructor: Master Teacher, Anpu Mfundishi

Minimum 4 participants

MONDAYS

Code: 256005 July 29 – September 9 (NO CLASS 9/2)

Code: 256005 September 16 – October 28 (NO CLASS 10/14)

Code: 256005 November 4 – December 9

Code: 256005 January 6 – February 24 (NO CLASS 1/20, 2/17)

THURSDAYS

Code: 256004 August 15 – September 19

Code: 256004 September 26 – October 31

Code: 256004 November 9 – December 19 (NO CLASS 11/28)

CHAIR AEROBICS

CHAIR AEROBICS

- **\$5 DROP IN FEE**
- **MONDAYS**
- **10:00AM – 10:30AM**

- **Improve flexibility**
- **Increase strength**
- **Enhance circulation**
- **Boost mood**
- **Low-impact exercise**

COMMUNITY GARAGE SALE IN THE PARK

All Ages (children must be accompanied by an adult)
Sgt. Means Park
Saturday, September 14, 2024 9:00 am - 1:00 pm

Event Details:

Discover great deals on a variety of items! This event is perfect for all ages, but children must be accompanied by an adult.

Don't miss out on the chance to find hidden treasures and connect with your neighbors. Whether you're looking for household goods, toys, or unique finds, there's something for everyone!

Mark your calendars and spread the word! We can't wait to see you there!

Follow us on Facebook
www.facebook.com/ofparks



WATERCOLORS

Watercolors

Whether you are a beginner or have already dabbled in this medium, come and celebrate watercolors with our popular art teacher, Sandee Theisen. You will explore such techniques as wet in wet, dry brush, mixed media, sepia and color therapy. Paint subjects range from nature themes and landscapes to still life interiors. A supply list will be furnished at registration.

Adults

The Silo

\$68 Non-resident Rate

\$50 Discounted Resident Rate

Instructor: Sandee Theisen

Minimum 4 participants

9:00 am – 11:15am

Code: 241201

September 3 – October 8

Code: 241201-02

October 15 – November 26 (NO CLASS NOV 5)

Code: 241201-04

January 21 – February 25, 2025



Follow us on Facebook
www.facebook.com/ofparks



OLYMPIA FIELDS
PARK DISTRICT

diy

CRAFT NIGHTS WEDNESDAYS



Explore, Create, and Have Fun! ●●●●●

✓ Painting

✓ Crafting

✓ Creating

Prices

\$35

REGISTER NOW

☎ (708) 481-7313

🌐 ofparks.org

- **September 18**
- **October 16**

- **November 13**
- **December 11**

CRAFT NIGHTS: DIY

Craft Nights: DIY Tassel Mirror

Wednesday, September 18

6:00-9:00pm

\$35 per person

Let's DIY a statement piece together! Make a customized mirror using different colored yarns and beads to hang on your wall.

Craft Nights: DIY Chunky Knit Pillow

Wednesday, October 16

6:00-9:00pm

\$35 per person

Learn how to knit a pillowcase using chunky yarn and your hands (no needles required!) to add a unique handmade accent pillow to your home!

Craft Nights: DIY Matte Painting Wall Art

Part 1: Wednesday, November 13

6:00-9:00pm

\$35 per person

Create your own graphic matte painting to showcase on your wall. We will use basic painting techniques to design and paint, no experience needed! Choose from our pre-picked designs or bring your own!

Craft Nights: Pom Pom Wreath

Wednesday, December 11

6:00-9:00pm

\$35 per person

Create a custom Holiday Wreath to add to your Winter collection! We will use yarn pom poms, ribbons, and winter synthetic floral stems.

Pottery Paint Party

Sunday, November 17

2:00-4:00pm

\$35 each painter

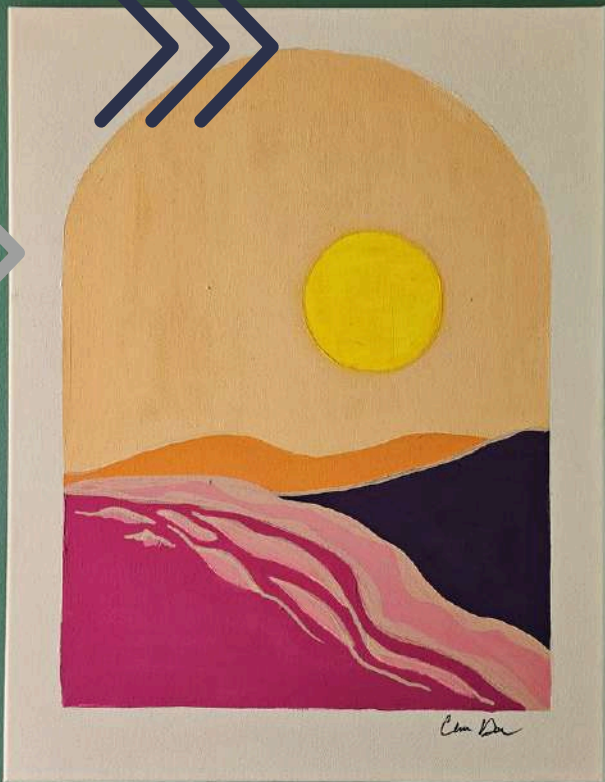
All supplies will be provided. Pick one of 3 ceramic pieces to paint with your child and create a stunning ceramic masterpiece.

Must register 1 week in advance. Minimum 4 Sign-ups

JOIN NOW diy CRAFTS



hand crafted





OLYMPIA FIELDS PARK DISTRICT

♥ FAMILY ♥
Events

2024

FAMILY EVENTS

Family Minute to Win It

Sunday, September 22

5:00pm-7:00pm

\$20 per family

The Family Minute to Win It event is scheduled for Sunday, September 22, from 5:00 PM to 7:00 PM. This exciting family-oriented gathering offers a fun-filled evening of friendly competitions and games inspired by the popular "Minute to Win It" game show format. For a fee of \$20 per family, participants can enjoy a variety of quick, challenging games that typically involve common household items and must be completed within 60 seconds. The event promises to be an entertaining way for families to bond, compete, and create lasting memories together. Goodies will be provided, adding to the festive atmosphere of this engaging family activity.

Mother (Grandmother) & Son Fun Night

Friday, November 8

6:30pm-9:00pm

\$25 per couple, \$15 each additional child

\$20 Early Bird Discount

The Mother (Grandmother) & Son Fun Night is an exciting event scheduled for Friday, November 8, 2024, from 6:30 PM to 9:00 PM at the Bradford Barn. This special evening offers mothers, grandmothers, and their sons a chance to bond over pizza, games, movies, and other activities. The event is priced at \$25 per couple, with an additional \$15 for each extra child. Those who plan ahead can take advantage of an early bird discount, reducing the cost to \$20 per couple. This fun-filled night promises to create lasting memories for mothers, grandmothers, and sons of all ages

FAMILY EVENTS

Daddy Daughter Date Night

Date: Friday, February 7, 2024

Time: 6:30PM - 8:30PM

Location: The Bradford Barn

Join us for an enchanting evening at our annual Daddy Daughter Date Night! This special event is designed to celebrate the unique bond between fathers and daughters, creating memories that will last a lifetime!

Highlights

- **Dinner and Refreshments:** Enjoy a delightful meal together, featuring a variety of delicious dishes and kid-friendly options.
- **Entertainment:** Dance the night away music playing your favorite tunes. There will also be fun games and activities to keep everyone entertained.

Create a Cookie

Sunday, February 23

2:00 pm-4:00 pm

\$5 per child

Join us for an afternoon of family fun! Decorate and enjoy a cookie loaded with all your favorite icings, sprinkles, candies, and more!



HOLIDAY EVENTS

The Polar Express Storytime

- Date: Saturday, December 7, 2024
- Time: 12:45 PM - 6:00 PM
- Cost: \$25 per child. \$20 for additional child same household.

All aboard the Polar Express Storytime train hosted by the Olympia Fields Park District! We will take a Metra train from the Olympia Fields train station on 203rd Street to the "North Pole" (Chicago). During the ride to the "North Pole", we will read the beloved story, The Polar Express. Also, Santa will visit with every good little girl and boy, and give a gift to them. When we arrive at the "North Pole," guests will have approximately 3 hours to explore Chicago. We ask that all participants meet us at 4:50pm to board the train together. During the train ride together. During the train ride home, we will pass out goody bags, sing carols, and play games. Don't miss out on this great holiday event.

All ages (children must be accompanied by an adult)

Metra Station parking lot on 203rd Street, just east of Kedzie Ave (\$1.50 to park)

Santa Visits

- Event Details:
- Date: Friday, December 20, 2024
- Time: 9:00 AM - Noon
- Cost: \$10 for each stop

Each visit includes:

- A festive goody bag filled with treats and surprises for the kids
- A special moment for a photo with Santa, capturing the magic of the season



You're invited to our
**SENIOR EVENTS
& TRIPS**

Day Trips

Fashion Outlets Mall

Papeduex Seafood Kitchen

Walnut Room

Extended Trips

Washington D.C.

Martha's Vineyard

New Hampshire

Olympia Fields Park District
20712 Western Ave, Olympia Fields, IL 60461



SENIORS EVENTS

SENIOR BINGO & COOKIE EXCHANGE DAY!

🎉 Join us for a delightful afternoon of fun, games, and holiday cheer! 📅

Date: Wednesday, December 18, 2024

🕒 Time: 1:00 PM - 3:00 PM

💰 Cost: Free

Bring your favorite homemade or store-bought cookies to share with friends and neighbors. Enjoy a festive game of Bingo while indulging in delicious treats! Let's come together to celebrate the season with laughter, community, and sweet surprises. We can't wait to see you there!



Follow us on Facebook
www.facebook.com/ofparks



PLEASANT HOUSE PUB

Thursday, January 9th 2025

10:30am - 3:00pm

\$25 Transportation only



Call 708-481-7313 ext. 221 to sign up

SENIORS TRIPS

Apple Holler

Sturtevant, WI

Friday, August 30

9:00am - 3:00pm

\$27 per person (transportation only)

Pick your own apples or pears or buy a 5-6lb bag for \$5.95 in the store. Take a break and eat breakfast or lunch in the restaurant.

Navy Pier

Wednesday, September 25

9:00am - 3:00pm

\$27 per person (transportation only)

Explore what Navy Pier has to offer! Enjoy the many shops, the new IMAX experience, or stroll along the pier. NOTE: The IMAX experience is available to do on your own & is purchased separately. It is \$31 a ticket for a 30min 'flyover' of Chicago. There will be stairs and standing included during the duration, if you need accommodations, you must call ahead.

Fashion Outlets Mall

Monday, October 7

9:00am - 3:00pm

\$25 per person (transportation only)

Enjoy a day of shopping bargains. Some places to visit: Bloomingdales the Outlet Store, Coach Outlet, Nordstrom Rack, Nike Factory Store, Lindt Chocolates, Sketchers, Vitamin World and Many more. Grab a bite to eat or a snack: Molly's Cupcakes, Haagen-Daz, China Wok, Cinco de Mayo Mexican Grill, etc.

Papeduex Seafood Kitchen

Westmont, IL

Wednesday, October 23

11:00am - 3:00pm

\$25 per person (transportation only)

Code: 578999-48

We will enjoy freshly prepared seafood, delicious meal, appetizer & drink options.

SENIORS TRIPS

Twelve Islands & Albanese Candy Factory

Crown Point, IN

Wednesday, November 20

10:30am - 3:30pm

\$27 per person (transportation only)

Code: 578999-31

Enjoy delicious Greek entrees starting at just \$10. Then do some holiday shopping at the Candy Factory Outlet.

Walnut Room

Monday, December 9

9:30am - 3:30pm

\$27 per person (transportation & parking only)

Code: 578999-09

Enjoy a traditional American menu that is not too pricey \$\$\$. Get into the Holiday Spirit. Take in the sights, smells and feeling of holiday joy. Lunch at 11:00 then a little bit of shopping Until 2:00pm.

Pleasant House Pub

Tuesday, January 9

10:30am - 3:00pm

\$25 per person (transportation only)

Code:

charming British-American pub known for its artisanal Royal Pies and cozy atmosphere. They offer a diverse menu featuring options like Bangers & Mash and vegetarian dishes, along with delightful desserts such as Sticky Toffee Pudding.

Buffalo Grove Restaurant & Chocolate Outlet Store

Monday, February 10, 2025

10:00am - 4:00pm

\$30 per person (transportation only)

Code: 578999-21

We will enjoy a home cooked lunch with an old-fashioned ice parlor then go shopping at a chocolate factory outlet store. A sweet fun filled day!

OLYMPIA FIELDS PARK DISTRICT PRESENTS

Washington, DC - Our Nation's Capital



INCREDIBLE PRICE INCLUDES:

- ◆ Motorcoach transportation
- ◆ 6 nights lodging including 4 consecutive nights in the Washington, DC area
- ◆ 10 meals: 6 breakfasts and 4 dinners
- ◆ Guided Tour of Washington, DC including the WW II Memorial, Capitol Hill, Embassy Row, the Korean War Veterans Memorial, the Vietnam Veterans Memorial, the Martin Luther King, Jr. National Memorial, the Lincoln Memorial, and more!
- ◆ Evening Guided Memorial and Monuments Tour
- ◆ Full Day visit to the Smithsonian National Museum of the African American History & Culture
- ◆ Full Day admission to the Museum of the Bible

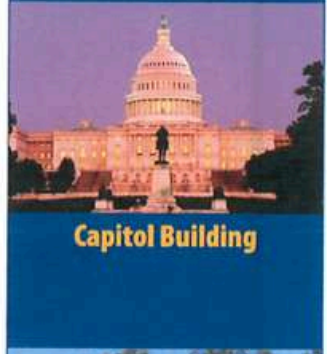
For more pictures, video, and information visit:
www.GroupTrips.com/OlympiaFieldsParkDistrict

\$995*

7 Days 6 Nights

*PER PERSON, DOUBLE OCCUPANCY

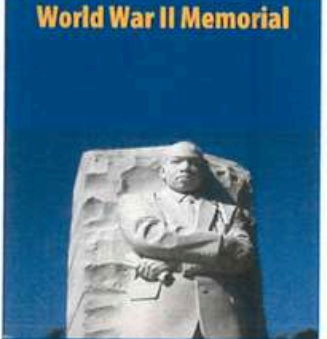
(Thu - Wed) Mar 20 - 26 2025



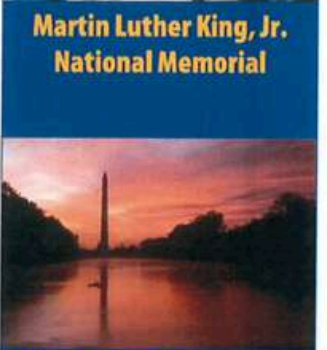
Capitol Building



World War II Memorial



Martin Luther King, Jr.
National Memorial



Washington Monument

Departure: Olympia Fields, IL @ 8 am

Day 1: Depart your group's location in a spacious, video and restroom equipped Motorcoach and set off for our Nation's Capital - Washington D.C. Tonight, check into an en route hotel for a good night's rest.

Day 2: Today, after enjoying a Continental Breakfast you will continue towards Washington, D.C. Upon arrival, enjoy a relaxing Dinner and check into your Washington D.C. area hotel for a four night stay.

Day 3: Enjoy a Continental Breakfast before departing for a full-day Guided Tour of Washington, D.C. Some of the awe-inspiring sights on this fantastic tour will include the US Capitol, the White House, the National Archives, Embassy Row, and Georgetown. During the day, you will see the Washington Monument, Lincoln Memorial, the Martin Luther King, Jr. National Memorial, and several War Memorials. This evening, enjoy Dinner at a local restaurant before continuing on the Guided Memorial and Monuments Tour.

Day 4: Begin the day with a Continental Breakfast. Today, you will enjoy a full day visit to the Smithsonian National Museum of African American History & Culture. Later, you'll enjoy Dinner with entertainment before returning to your hotel for the night.

Day 5: Enjoy a Continental Breakfast before departing for a full day visit to the Museum of the Bible. Discover the history, narrative and impact the Bible has played in our world's history. From the 40 foot tall bronze doors at the museum's entrance, to the roof-top garden, explore over six floors of exhibits that span the time, space and cultures of the Bible. With over 40,000 items, the Museum of the Bible's collection contains some of the oldest and most important biblical artifacts and documents in human history. This evening, enjoy a relaxing Dinner and return to your hotel.

Day 6: Enjoy a Continental Breakfast before leaving for the National Harbor, a unique waterfront wonderland of shopping, dining, and more. This evening, relax at your en route hotel.

Day 7: Today, after enjoying a Continental Breakfast, you will depart for home... a perfect time to chat with your friends about all the fun things you've done, the great sights you've seen, and where your next group trip will take you!

ADD SOME PEACE OF MIND TO YOUR TRIP...

With Diamond Tours Exclusive *Travel Confident*® Protection Plan.
 See separate advertisement...

\$75 Due Upon Signing. *Price per person, based on double occupancy. Add \$305 for single occupancy.
 Final Payment Due: 1/13/2025

FOR INFORMATION & RESERVATIONS CONTACT:

Jennifer Braun-Denton @ (708) 481-7313 Ext. 221

OLYMPIA FIELDS PARK DISTRICT PRESENTS

New Hampshire & the White Mountains



INCREDIBLE PRICE INCLUDES:

- ♦ Motorcoach transportation
- ♦ 8 nights lodging including 4 consecutive nights in New Hampshire
- ♦ 15 meals: 8 breakfasts, 1 lunch, and 6 dinners
- ♦ Experience a 1.3 Mile Scenic Gondola Ride to the Summit of Loon Peak
- ♦ Enjoy a 2.5 Mile Train Ride at Clark's Trading Post
- ♦ Admission to the Wright World War II Museum including 14,000 artifacts and Military Vehicles
- ♦ See a Live Bear Show & the Chinese Acrobats Show
- ♦ Enjoy a Scenic Narrated Cruise on Lake Sunapee
- ♦ Enjoy a Narrated Trolley Tour of Wolfeboro
- ♦ Exclusive Diamond Tours Dinner Party with Entertainment

For more pictures, video, and information visit:
www.GroupTrips.com/OlympiaFieldsParkDistrict

\$1535*

9 Days 8 Nights

*PER PERSON, DOUBLE OCCUPANCY

(Sat - Sun)
Jun 21 - 29
2025



See a Live Bear Show



Experience a 1.3 Mile Scenic Gondola Ride



Enjoy a Fun Train Ride



Scenic Narrated Cruise on Lake Sunapee

Departure: Olympia Fields, IL @ 8 am

Day 1: Board your spacious, video and restroom equipped Motorcoach and set off for New Hampshire. Tonight, check into an en route hotel for a good night's rest.

Day 2: After enjoying a Continental Breakfast, you will depart for the Arboretum at Penn State in University Park, PA. Later in the day, enjoy Dinner and check into your en route hotel.

Day 3: Today after enjoying Continental Breakfast, you'll arrive in picturesque New Hampshire. Tonight, you'll enjoy Dinner before checking into your hotel for a four night stay.

Day 4: Start with a Continental Breakfast, then you'll head to beautiful Lake Sunapee for a narrated SCENIC LAKE CRUISE departing from Sunapee Harbor. Come aboard, and take-in the beautiful scenery. This afternoon, you will enjoy a memorable group photo opportunity located at an overlook on the Kancamagus Highway. This evening, enjoy an exclusive Diamond Tours Dinner Party with Entertainment!

Day 5: Begin the day by enjoying a Continental Breakfast, before departing for the WRIGHT WORLD WAR II MUSEUM. This award-winning museum has over 14,000 items in collections representing both the home front and the battlefield and a vast collection of fully operational military vehicles. Next, you'll enjoy a NARRATED TROLLEY TOUR of WOLFEBORO. Discover Wolfeboro's unique colonial heritage, scenic views of Lake Winnepesaukee, beautiful waterfront homes, and many other points of interest. Tonight, enjoy Dinner at a local restaurant before returning to your hotel.

Day 6: After a Continental Breakfast, you'll depart for CLARK'S TRADING POST. Upon reaching your destination, you will have the opportunity to watch A LIVE BEAR SHOW. Let bears Darla and Hildie entertain you with their tricks as they follow in the "paw prints" of their famous bear predecessors. You'll also see the CHINESE ACROBATS SHOW. Take a break and enjoy a light Lunch including a fresh deli sandwich. This lunch is included with your tour. Then, enjoy a famous 2.5 mile Train Ride. Travel across the Pemigewasset River through a 1904 covered bridge. Continue on your journey to Loon Mountain. Enjoy a 1.3-mile SCENIC GONDOLA RIDE to New Hampshire's summit of Loon Peak. Upon reaching the summit, you'll be greeted with fresh mountain air and breathtaking views. Later tonight, enjoy Dinner at a local restaurant.

Day 7: Enjoy a Continental Breakfast before leaving for the Faneuil Hall Marketplace in Boston, MA. Later that day, after a relaxing Dinner, you'll check into your en route hotel.

Day 8: Today you will have Continental Breakfast and then go to Steamtown - a National Historic Site in Scranton, PA. Tonight, relax in your en route hotel.

Day 9: Today after enjoying a Continental Breakfast, you depart for home... a perfect time to chat with your friends about all the fun things you've done, the great sights you've seen and where your next group trip will take you!

ADD SOME PEACE OF MIND TO YOUR TRIP...

With Diamond Tours Exclusive Travel Confident® Protection Plan.
See separate advertisement...

\$75 Due Upon Signing. *Price per person, based on double occupancy. Add \$549 for single occupancy.
Final Payment Due: 4/14/2025

FOR INFORMATION & RESERVATIONS CONTACT:

Jennifer Braun-Denton @ (708) 481-7313 Ext. 221

OLYMPIA FIELDS PARK DISTRICT PRESENTS

Cape Cod, Martha's Vineyard, & Plymouth



Photo Credit: Dan Baranowski

INCREDIBLE PRICE INCLUDES:

- ◆ Motorcoach transportation
- ◆ 6 nights lodging including 4 consecutive nights in the quaint Cape Cod area
- ◆ 10 meals: 6 breakfasts and 4 dinners
- ◆ A visit to Plymouth, MA and famous "Plymouth Rock"
- ◆ An escorted visit to lovely, artistic Martha's Vineyard
- ◆ A Guided Tour of the historic seaside towns of Hyannis and Sandwich
- ◆ A visit to the JFK Museum
- ◆ A Guided Tour of the "Outer Cape", including Provincetown and Chatham

For more pictures, video, and information visit:
www.GroupTrips.com/OlympiaFieldsParkDistrict

\$1065*

7 Days 6 Nights

*PER PERSON, DOUBLE OCCUPANCY

(Sun - Sat)
Sep 7 - 13
2025



Picturesque Provincetown



Lighthouse overlooking Vineyard Sound



Experience 17th century history in Plymouth, MA



One of Cape Cod's many Windmills

Departure: Olympia Fields, IL @ 8 am

Day 1: Board your spacious, video and restroom equipped Motorcoach and set off for beautiful Cape Cod! Tonight, you will check into an en route hotel for a good night's rest.

Day 2: Enjoy a Continental Breakfast at your hotel, before arriving in Cape Cod - the perfect example of all that is New England! This evening you will have Dinner and check into your Cape Cod area accommodations for a four night stay.

Day 3: Enjoy a Continental Breakfast and embark on your GUIDED TOUR OF HYANNIS and SANDWICH. Start off with a visit to the lovely Village of HYANNIS where you'll stop at the JFK MUSEUM - an exhibit designed to open a window on the days JFK spent on Cape Cod. Next, you'll visit the John F. Kennedy Memorial in HYANNIS. Lastly, you'll head to the quaint and historic village of SANDWICH. Tonight, end your day with a relaxing Dinner.

Day 4: After a Continental Breakfast, a Guide will accompany you on a ferry ride to the famous getaway island - MARTHA'S VINEYARD. Upon arrival, enjoy free time to soak up the charm of this lovely island with its unique shops, quaint restaurants, and historical sites. Later this afternoon, you'll depart Martha's Vineyard and enjoy Dinner at a local restaurant.

Day 5: After a Continental Breakfast you will depart for a GUIDED TOUR OF THE OUTER CAPE. See the Eastham Windmill, the Cape Cod National Seashore, Race Point Visitor Center, and the Marconi Station area with its spectacular "ocean to bay" view across the entire cape. Then, you'll make a stop in colorful PROVINCETOWN - home to artists, great galleries, stores and boutiques. Next, you'll breathe in the sea air in CHATHAM with its panoramic views of the Atlantic and rustic barrier beaches. Tonight, enjoy Dinner and entertainment.

Day 6: Enjoy a Continental Breakfast before departing for a visit to Plymouth, MA - "America's Hometown!" See the famous "Plymouth Rock." This evening relax at your en route hotel.

Day 7: Today, after enjoying a Continental Breakfast, you will depart for home... a perfect time to chat with your friends about all the fun things you've done, the great sights you've seen, and where your next group trip will take you!

ADD SOME PEACE OF MIND TO YOUR TRIP...
With Diamond Tours Exclusive Travel Confident® Protection Plan.
See separate advertisement...

\$75 Due Upon Signing. *Price per person, based on double occupancy. Add \$229 for single occupancy.
Final Payment Due: 6/30/2025

FOR INFORMATION & RESERVATIONS CONTACT:

Jennifer Braun-Denton @ (708) 481-7313 Ext. 221



Help Put Your *Mind at Ease* on the Next Trip...

with the **Travel Confident® Protection Plan!**

Travel Protection - Same Price - *Regardless of Age!*

ADD SOME PEACE OF MIND TO YOUR TRIP...

with the Travel Confident® Protection Plan.

Easy online sign-up is available at: www.travelconfident.com

Travel Confident® Protection Plan can no longer be purchased by check or money order.

See separate advertisement flyer from your group leader for additional details and an important disclaimer.

Travel Protection is available as part of Diamond Tours®, Inc. Exclusive Travel Confident® Protection Plan.



**Olympia Fields
Park District**

PICNIC RENTALS

PICNIC RENTALS

Picnic Rentals Picnic Area Rentals can be contracted and approved up to one year in advance!

BICENTENNIAL PARK

- Located at 203rd & Governor's Highway
- 1 Covered Picnic Area
- 3 Soccer Fields
- 2 Baseball Fields

PICNIC EQUIPMENT RENTAL

There is a \$50 refundable deposit required for all picnic equipment rentals.

Picnic Kit - \$25 Rental Fee

Our Picnic Kit includes: 4 throw down bases, 2 Frisbees, 2 softball bats, 2-12" softballs, 2-16" softballs, 1 hard bat, 1 hard ball, 1 Wiffle ball bat, 1 Wiffle ball, 1 soccer ball, 1 playground ball, 1 volleyball, and 1 basketball.

In addition to the Picnic Kit, we have the following separate items available to rent for \$5 each:

- Frisbee
- Horseshoes
- Bocce Balls
- Baggo (Bean Bag Toss game)



PICNIC RENTALS

LEAGUE RENTALS

Looking for a home for your Softball, Soccer, Football, Tennis or Frisbee Golf League?

We have just the place for you! Athletic field rentals at Sgt. Means Park and Bicentennial Park.

\$35 per Game / Non-resident

\$25 per Game / Discounted resident rate

Security deposit \$100

HOME OWNER ASSOCIATION

Olympia Fields Park District Home Owner Associations Rent Bicentennial or Sgt. Means Park Picnic Areas free for your yearly picnics. Deposits and other applicable rules and fees may apply.



PICNIC RENTALS

PICNIC RENTALS

RENTAL FEES AND SECURITY DEPOSIT INFORMATION

The following rates apply regardless of weather conditions. No refunds will be given based on weather conditions. Max of 8 Hour Picnic Park Rentals.

BICENTENNIAL PARK: PICNIC RENTALS

# of Guests	Resident	Non-Resident
1-10	\$30*	\$60*
11-60	\$85*	\$170*
61-100 max	\$110*	\$220*

**Requires a \$100 security deposit*

Alcoholic Permit and Liability Fees \$225 - Non-refundable

Refunds available within 30 days of event. Checks to be picked up in office.

All cancellations must be in writing to the park district 60 days prior to the rental date. Otherwise, the security deposit will be forfeited. In case of cancellation, a processing charge of 50% of deposit will be retained if more than 60 days from rental date. Less than 60 days you will forfeit deposits.

Teen parties or large groups require additional security fees. All outdoor rentals that will have 100 or more attendees must be approved by the park board.

No park water usage. No water slides. No inflatables.

No amplified music (including DJs) allowed during picnics

Additional rental fees may apply depending on type of entertainment and/or rental equipment. Other rules and regulations apply. Please contact our office for further details.

Rentals less than 60 days away must be paid in full. Payments accepted for rentals less than 60 days from event must be made by credit card, money order or cash. Call office for further details.

PICNIC RENTALS

TOLENTINE PARK RENTALS

PICNIC RENTAL

Picnic area and tables until dusk
1 - 60 Guests
\$220 Non-Resident Rate
\$110 Discounted Resident Rate
\$100 Security Deposit



FOR SCHOOLS, CAMPS, AND DAYCARES ONLY

Splash Pad can accommodate Schools, Camps, and Daycares at a discounted rate:

\$150 per 90 minutes

\$100 security deposit (same rules apply)

*Schools camps and daycares can only rent from 10:30am-10:00 am - 11:30 am Monday - Friday only

MAX 8 HOUR PICNIC PARK RENTALS.

No Alcoholic Permitted

No barbecuing at this park location. No Inflatables

Splash Pad admission not included with picnic rental

Rentals less than 60 days away must be paid in full. Payments accepted for rentals less than 60 days from event must be made by credit card, money order, or cash. Call office for further details.

All cancellations must be in writing to the park district 60 days prior to the rental date. Otherwise, the security deposit will be forfeited. In case of cancellation, a processing charge of 50% will be retained if more than 60 days from rental date.

Refunds for security deposit available within 30 days of event. Rental groups must vacate when the splash pad is open to the public.

All park rental rules and regulations apply. Additional rules and regulations may apply for Tolentine Park rentals. Please contact Olympia Fields Park District for details.

Rentals must be booked at least 2 weeks in advance. Call 708-481-7313 to reserve the Splash Pad!

PICNIC RENTAL

the bradford barn

Whether you are planning a wedding, bridal shower, party, celebration, corporate retreat, workshop, retirement dinner, or an association meeting, our facilities can provide the perfect setting for you.

CULL HOUSE LIVING ROOM

Ideal for groups of up to 18 people.

SMALL RECREATION ROOM

Presentations for 8 to 24 people.

THE SILO

Ideal for groups of up to 40 people.

MAIN BARN ROOM

Ideal for groups of up to 128 people.

PAVILION

Ideal for groups of up to 150 people.

* Excludes Pavilion rental special 150 with bundle pricing only

TOURS, PRICING, AND RENTAL PACKAGES

Feel free to stop by at any time for a tour of the venue during office hours, you do not need to make any appointment!

Please contact 708-481-7313 for information about pricing and rental packages or visit us online ofparks.org

Tour Hours

Monday - Friday: 9:30-3:30

Saturday: 9:00-11:00



the bradford barn

The Bradford Barn rental bundle includes:

- Venue set up
- Main Barn Room
- Pavilion (Open air) (Seasonal: May-Oct)
- Silo
- Catering Kitchen
- Loft for DJ
- Facility Attendant
- High boy tables (6) if desired
- White chairs, round tables, rectangle tables
- Access to audio equipment

4 hours minimum
12 hours maximum

(All Events must end by 12 A.M including decoration and cleanup)

We offer special wedding reception packages that include use of Main Barn Room (Ideal for groups of up to 120 people), Outdoor Pavilion (Ideal for groups of up to 140 people during May - October), Silo Room, Catering Kitchen, Cull House living room (Bridal Suite).

Seasonal Bundle Rates (May - October)

Non-Resident Rates	Resident Rates
4 Hours: \$1560	4 Hours: \$1326
6 Hours: \$2340	6 Hours: \$1989
8 Hours: \$3120	8 Hours: \$2652
10 Hours: \$3900	10 Hours: \$3491
12 Hours: \$4680	12 Hours: \$3987

- \$500 Security Deposit in addition to bundle rates
- \$300 per hour outside of bundle hours listed.
- \$35 per hour OFPD Security Fee required for groups 99+ and teen parties 50+
- \$225 Alcohol Liability Insurance available.



Recreation Room
Individual Room Rate

Recreation Room can be used for:

- Seats 24
- Possible Groomsman Room
- Possible Coat room
- \$80 - Per Hour. Non-Resident Rate
- \$50 - Per Hour. Resident Rate
- \$100 additional security deposit



Cull House
Individual Room rate

Cull House can be used for:

- Bridal Suite Photos
- Seats 14
- \$45 - Per Hour Non-Resident
- \$30 - Per Hour Resident Rate
- \$100 additional security deposit



Silo Room
Individual Room Rate

Silo Room can be used for:

- Additional seating, buffet, photos.
- Wedding cake, dessert spread, baby shower, bridal shower
- Seats 40
- \$75 - Per Hour. Non-Resident Rate
- \$55 - Per Hour. Resident Rate
- \$100 additional security deposit



Main Barn Room
Individual Room Rate

Main Barn can be used for:

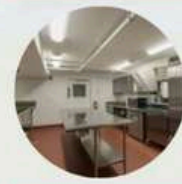
- Seating capacity 125
- Seats 90 with room for dance floor
- \$225 - Per Hour. Non-Resident
- \$191.25 - Per Hour. Resident Rate
- \$300 additional security deposit



Pavilion
Individual Room Rate

Pavilion can be used for:

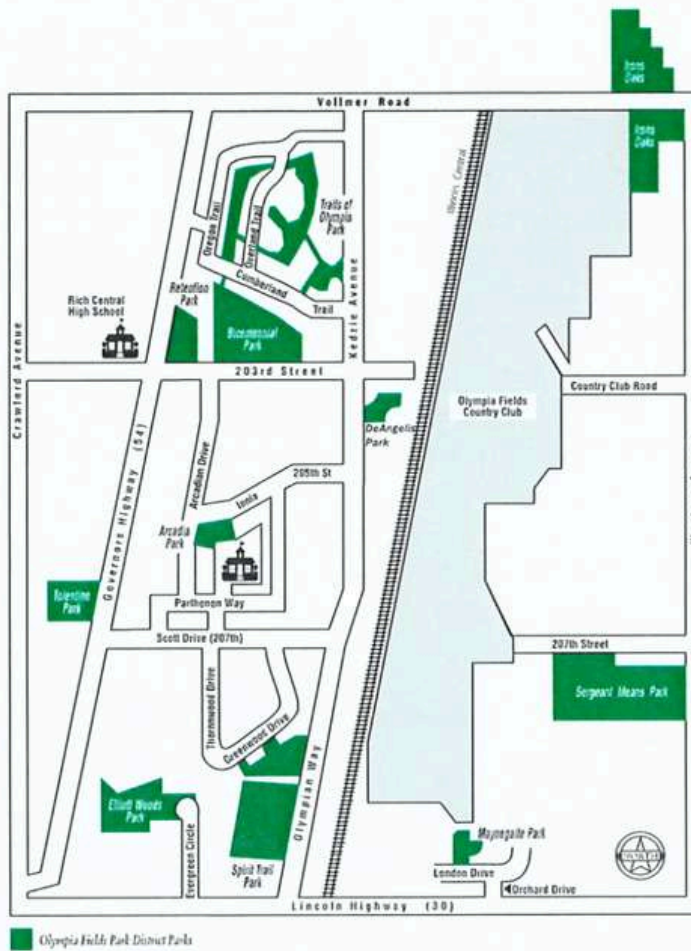
- Dance floor, Wedding ceremony or general events.
- \$225 - Per Hour Non-Resident Rate
- \$191.25 - Per Hour Resident Rate
- \$300 additional security deposit



Catering Kitchen
Individual Room Rate

Catering Kitchen can be used for:

- Freezer
- Refrigerator
- Food warmer
- Microwave
- Ice Maker
- Kitchen is added to all indoor rentals FREE



Olympia Fields Park District Parks

	Acreage	Playground Apparatus	Athletic Fields	Picnic Areas	Sledding Hill	Tennis Courts	Basketball Court	Nature Area	Sitting Area	Bicycle Path	Disc Golf	Community Gardens	Meeting Facilities	Picnic Shelter	Concession Stand	Restrooms	Splash Pad
Arcadia Park Arcadian Drive	1.5	X	X	X	X				X								
Bicentennial Park 203rd and Governor's Hwy	14	X	X	X	X				X	X				X	X	X	
DeAngelis Park Keadie Ave. & Metra Station	3.1								X	X							
Elliott Woods Park Evergreen Circle	6.8							X									
Irons Oaks Environmental Learning Center Western and Vollmer	40			X				X	X				X	X		X	
Maynegaite Park Orchard and London Drive	4.2	X	X	X					X								
Sgt. Means Park 207th and Western Avenue	20	X	X	X	X	X	X	X	X	X	X		X	X		X	
Spirit Trail Park Keadie Avenue	35.5							X									
Tolentine Park 207th and Governor's Hwy	10	X	X	X			X	X	X	X		X		X			X
Trails of Olympia North of Bicentennial Park	12.4								X	X							
Total Acres	144.7																

Registration Policies

1. Proof of residency (utility or tax bill) will be checked by the Park District staff upon registration.
2. Park District residents receive a discounted rate, as they pay taxes to the district. (*Graymoor residents are not considered residents. Their tax dollars go to a different district*)
3. Any applicant or participant may be required at any time to provide reasonable proof of age, residency, marital status or dependency.
4. You must complete the registration form and submit with full payment when registering for a program.
5. Registration is accepted at the Park District office (The Barn) located at: 20712 Western Avenue Olympia Fields, IL 60461
6. Online registration is available on the district website: www.ofparks.org.
7. Drop-Off Registration - You may use the white drop box located to the right of the mail box outside the Cull House. This box is accessible 24 hours a day.
8. Pre-registration is necessary for most Park District programs.
9. All registration is done on a first come, first served basis. No space will be reserved until the appropriate program fee is paid.
10. Payment is accepted in the form of: cash, check, money order or credit card (Visa or MasterCard). Please make checks payable to: Olympia Fields Park District.
11. A \$35 fee will be charged for any returned check. Only cash will be taken in place of the NSF check.
12. Checks which are not cashed within the 90 day timeframe and need to be reprinted, will be charged a \$20 administrative fee.
12. Checks which are not cashed within 90 day timeframe and need to be reprinted, will be charged a \$20 administrative fee.

13. Program Fees will not be prorated when registering for a program if the class session has already started or you cannot attend the class dates as listed.
14. Waiting lists will be formed when a class is full. Every attempt will be made to open an additional class.
15. Programs may be cancelled prior to the start date due to low enrollment. Refunds will be issued in the form of a check or return of charges to credit card used in the transaction within 30 days of request. All programs or rental refunds to be received in the form of a check will be written to the person whose name appears on the original registration/rental. Checks will be available by pick-up only, no checks will be sent through the mail. A refund in the form of a check will be available for pick up within 30 days.
16. It is mutually understood that a FAXED registration document (including waiver and release of all claims) shall substitute for and have the same legal effect as the original form. Our fax number is 708-481-8735. Payment is required to reserve a spot. This fax does not reserve you a spot until payment has been received.

Refund Policies

1. In the event a program, trip, or event is cancelled by the Park District, each registrant will be notified and a full refund will be issued and available for pick up within 30 days.
2. A \$5 administration fee will be assessed on all refund requests by the participant. Refund requests for all programs (excluding trips) must be requested prior to the second class meeting. Refunds will not be approved past the start of the second class meeting. Refunds will be ready for pick up within 30 days of request.
3. No refunds will be given for trips past the registration deadline date- unless there is a waiting list and someone can take the place from that waiting list.

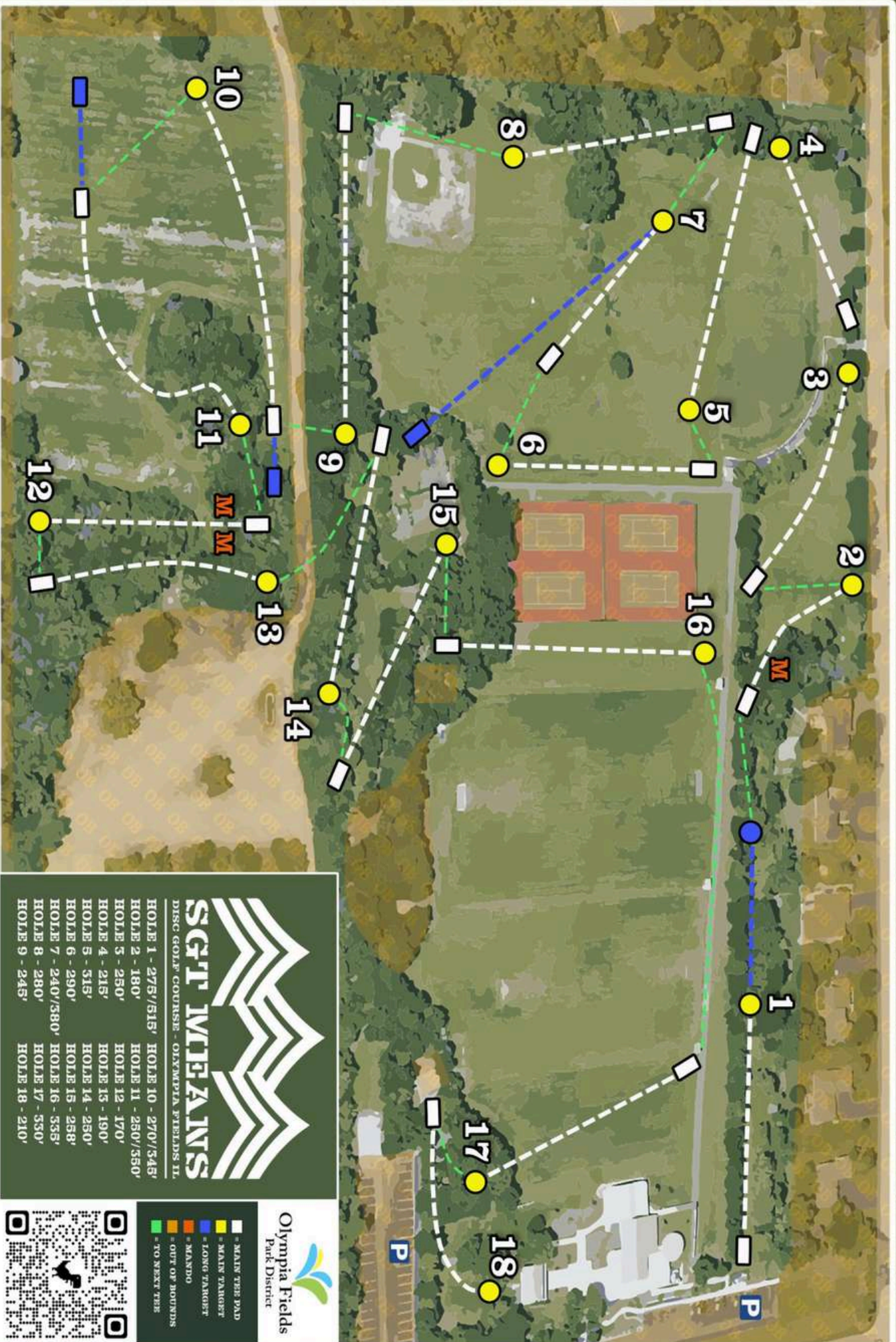


DISC GOLF COURSE

WE HAVE DISC GOLF FRISBESS FOR SALE



DISC GOLF COURSE >>>



SGTT MCINTAINS
DISC GOLF COURSE - OLYMPIA FIELDS II

HOLE 1 - 275'/515'	HOLE 10 - 270'/345'
HOLE 2 - 180'	HOLE 11 - 250'/350'
HOLE 3 - 250'	HOLE 12 - 170'
HOLE 4 - 215'	HOLE 13 - 190'
HOLE 5 - 315'	HOLE 14 - 250'
HOLE 6 - 290'	HOLE 15 - 258'
HOLE 7 - 240'/380'	HOLE 16 - 335'
HOLE 8 - 280'	HOLE 17 - 330'
HOLE 9 - 245'	HOLE 18 - 210'

Olympia Fields
Park District

- MAIN TARGET PAD
- MAIN TARGET
- LONG TARGET
- HAZARD
- MANDO
- OUT OF BOUNDS
- TO NEXT TEE

GENERAL INFORMATION

BOARD OF COMMISSIONERS

- Park Board President: Deborah Robinson
- Park Board Vice President: Steve Hurley
- Park Board Commissioner: Lori Carlton-Jordan
- Park Board Commissioner: Trinetta Britt-Johnson
- Park Board Commissioner: Neil Pierce

ADMINISTRATIVE STAFF

- Jesus Vargas, Executive Director
- Jennifer Braun-Denton, Facilities Manager
- Beverly Meekins, Treasurer
- Christina Denton, Facilities & Recreation Supervisor

BOARD MEETING DATES

The Olympia Fields Park District Board of Park Commissioners meets the third Tuesday of each month at 6:00 pm.

BEHAVIOR POLICY

The Park District reserves the right to dismiss a participant from a program if their behavior or language is deemed inappropriate by staff, or if it prevents fellow participants from having the best experience possible.

LOOKING TO VOLUNTEER?

Several of our Park District programs have been successful due to the individuals who volunteer their time to assist us in the programs we offer. The Park District is looking for individuals to assist with programs and special events. If you would like to get involved, please stop by the Park District office and fill out a volunteer application. Please note for which programs/events you would like to volunteer.

ADA CONFORMITY

Olympia Fields Park District intends to comply with the intent and spirit of the Americans with Disabilities Act (ADA). If you require special accommodations, call the Park District at 708-481-7313 so that we can make necessary accommodations.

PARK DISTRICT OFFICE LOCATION

Sgt. Means Park, The Bradford Barn
20712 Western Avenue Olympia Fields, Illinois 60461
708-481-7313 (phone)
708-481-8735 (fax)
www.ofparks.org

OFFICE HOURS

Monday - Friday: 9:00 am - 4:00 pm
Saturday: 9:00 am - Noon
Sunday: Closed

EMERGENCY CLOSING INFORMATION

www.EmergencyClosings.com
(847) 238-1234

PHOTOGRAPHY POLICY

Olympia Fields Park District uses photographs in programs and special events to inform others of the many recreational opportunities available in our community. We do not use identification in our brochure. If you do not wish to have your picture taken, please inform the photographer. The Park District does not control newspaper photographers or others who may photograph program participants.

LOCAL ORGANIZATIONS

Enhancement Organization of Olympia Fields
Contact: Willett Hudson info@eoof.org

Park Forest Library
400 Lakewood Blvd. Park Forest, IL 60466
708-748-3731
www.pfpl.org

Olympia Fields Women's Club
Contact: Lola Prouix 708-481-8393

HF-Olympia Fields Soccer Club
708-802-4100
(general information and girls program)
708-802-2697
(boys program) www.hfsoccerclub.org

FAQ

2024 Splash Pad Information:

Tolentine Park features a Splash Pad that is fun for all ages. Tolentine Splash pad is open from Memorial Day to Labor Day from 12pm-5pm 7 days a week, weather permitting.

Resident Daily Fee

- \$2 per admission

Non-Resident Daily Fee

- \$5 per admission

Daily entry fee can be paid at the Splash Pad by cash only.

Private Splash Pad Party Rentals Available

School, Day Camp, Daycare rentals are available at a discounted rate:

- \$150 per 1½ hour
- \$100 security deposit

10:00am-11:30 rental times only. If you wish to enter the Splash Pad outside of that time, each individual must pay the daily admission fee.

Does Olympia Fields Park District have a Disc Golf Course?

Yes, Olympia Fields Park District has a 20-hole course at Sgt. Means Park.

Does the Park District have a recreation center and club membership?

No

Does the Park District have a swimming pool?

No

Is the Park District affiliated with any other park districts in the area for special rates for their programs and recreational services?

Not at this time.

When is the Park District open?

- All parks are open from dawn to dusk.

The Park District office is open:

- Monday - Friday 9:00am - 4:00pm
- Saturday 9:00am - 12:00pm (some services are not available, please call ahead M-F to see if we can accommodate you)

There are often classes, programs, events, and trips that run outside of these hours as well.

Does the Olympia Fields Park District have accommodations for a participant with disabilities?

Yes, OFPD complies with the Americans with Disabilities Act (ADA) and works with South Suburban Special Recreation Association to provide necessary accommodations.

Does Olympia Fields Park District have a community garden?

Yes, Tolentine Park features our community garden with 90 plots available for seasonal rental. The Community Garden is open April through October. Please contact our office to find out how you can reserve your plot.

What is Irons Oaks?

Irons Oaks is a 37-acre nature preserve featuring environmental and adventure education opportunities. Irons Oaks is a joint agency of the Olympia Fields and Homewood-Flossmoor Park Districts. For more information, please contact Iron Oaks directly at (708) 481-2330 or visit the website: www.ironsoaks.com

Does Olympia Fields Park District provide any senior transportation?

No, however Rich Township offers rides each way (\$3.00) for seniors Monday - Friday 8:00am - 2:00pm within the boundaries of Rich Township (North-South 183rd Street to Steger Road and East-West Western Avenue to Harlem Avenue). Appointments need to be made more than two days prior to travel. Call (708) 748-6727 for additional information and other pricing.



Olympia Fields Park District Board

When are your Board Meetings?

Board Meetings are held in the Recreation Room of the Bradford Barn at Sgt. Means Park on the third Tuesday of every month at 6:00pm. If that day happens to be a holiday, the board meeting is held on the next business day. For a complete schedule, visit the Park Board page of our website: www.ofparks.org

Who are the Park Board Commissioners?

Deborah Robinson, President
Trinette Britt-Johnson, Commissioner
Lori Carlton-Jordan, Commissioner
Steven Hurley, Commissioner
Neil Pierce, Commissioner
Eric Anderson, Attorney

Can anyone attend Board Meetings?

The Park Board Meetings are open to the public. The park district strongly suggests that you contact Jesus Vargas, Executive Director, if you wish to be on the agenda for a particular meeting. Director Vargas can be reached at (708) 481-1713 ext.226 or emailed at jesus@ofparks.org.

How do I submit a FOIA request?

You may call, email, fax, or mail your request to the Freedom of Information Act Officer:
Jesus Vargas, Executive Director
(708) 481-1713 ext.226
or email at jesus@ofparks.org

How do I acquire a copy of the Park District budget?

Our budget may be viewed on our website: ofparks.org/about/
If you have further questions, please contact Jesus Vargas, Executive Director, to make a FOIA request to receive a copy of the Park District Budget.

Are there any volunteer opportunities at the Park District?

Please contact Jesus Vargas, Executive Director at (708) 481-1713 ext.226 or email at jesus@ofparks.org

I have a suggestion for a new class, and/or I would like to teach a class at the Park District.

Please contact Christina Denton, Facilities and Recreation Supervisor at our main office number (708) 481-7313 or email at christina@ofparks.org

I have a Park Maintenance question/suggestion/complaint.

Please contact Jesus Vargas, Executive Director at (708) 481-1713 ext.226 or email at jesus@ofparks.org

I am interested in sponsoring an event.

Please Contact Jesus Vargas, Executive Director at (708) 481-1713 ext.226 or email at jesus@ofparks.org

I am interested in purchasing advertisement space in the brochure.

Please contact Jesus Vargas, Executive Director at (708) 481-1713 ext.226 or email at jesus@ofparks.org

Follow us on Facebook
www.facebook.com/ofparks



Program Registration

How can I register for a program?

Olympia Fields Park District is dedicated to making registration an easy, breezy experience for our patrons. For your convenience, we provide two ways to register for most programs:

- Online at www.ofparks.org
- In person at the Park District office

What forms of payment do you accept?

Olympia Fields Park District accepts cash, checks, Visa, Mastercard, or money orders for registrations. Only Visa or Mastercard Credit Card payments online or over the phone.

Who is considered an Olympia Fields Resident?

An individual, family, or business that resides within the boundaries of the park district and pays taxes to Olympia Fields Park District is considered a resident and receives a discounted resident rate for most programs and rentals. A complete map is available for viewing in our seasonal brochures or at the office. Residents within the Graymoor subdivision do not pay park district taxes and do not receive the resident discount.

What forms of identification do I need to prove residency?

A government issued picture ID (driver's license or state ID) and utility bill within the last 30 days (either a gas, electric, or water) or a current property tax bill.

Can I register for programs if I'm not a resident?

Yes! All are welcome to participate. For most programs and memberships however, residents may receive a discounted price over non-residents.

Can I register for my nieces and nephews and/or grandchildren?

The park district requires that a legal guardian must sign the registration forms.

What if I need to withdraw from a program?

You may withdraw from a program before the second class, however there will be a \$5 cancellation fee unless there is a medical reason.

Can I register the day of for a program?

Nearly all our programs require that you register at least 3 business days prior to a program start date. This will ensure that there are enough patrons enrolled in a program to have it run, and to ensure your space is saved. If the program requires more or less times, it will be specified in the brochure next to the program.

I want to register for a program that has already started, will the program be prorated?

No, unfortunately we do not prorate a program.

Online Registration

Can I register for classes online?

Most of the programs offered by Olympia Fields Park District are available online through our website: www.ofparks.org.

How do I register online?

Online registration can be accessed through our website: www.ofparks.org. First, you will need to complete household information online. After that information is processed, typically within 1 business day, then you will receive your online ID and password via the submitted email address, enabling you to register online. For residents of Olympia Fields Park District to receive their discounted rates, proof of residency must be submitted in person at the office prior to your first online registration.

If I register online, will I know if I get into a program immediately?

Yes, the registrations are immediate, and you will receive confirmation of the registration once you complete the process. Your receipt will be emailed to your account on file, where you may open, save, or print the receipt. If a program is closed, showing no availability for registration, please call the office at (708) 481-7313 and we will gladly add you to a waitlist or see if we can expand the class for you.

Can I rent a facility or park online?

No. It takes a lot of information to make sure the rental of the facility or park will be just right for your event. In order to make sure your rental goes smoothly; we do require that facility and park rentals are completed in person at our office: The Bradford Barn – 201712 Western Avenue.

What if I have already taken a program and have forgotten my password?

From the Registration webpage, you can click on “What is my Username and Password?” or you can call our office and we will gladly email your information to the email address we have on file.

If I have trouble registering online, what should I do?

Please call the office during business hours and our staff will gladly assist you with the process. Please make sure to log out properly before calling the office, or else we will not be able to access your information in our system.

Facility Rentals

How do I rent a Park or Indoor Facility?

All rentals are processed at our office. If a reservation is made 30 days or more in advance, a deposit with a signed agreement is required to book the facility or park. The remaining balance is due no later than sixty (60) days before the event date. If a reservation is made less than 30 days prior to the event, the total amount must be paid in full at the time of the event. We do not accept checks as a form of payment if it is less than 30 days from the rental.

How can I cancel my rental reservation?

To cancel a rental reservation, please contact our office as soon as possible. In the case of a cancellation, the full security deposit is never fully refundable. If the rental is cancelled more than 60 days before the event, ½ of the deposit may be refunded. If the event is cancelled less than 60 days before the event, none of the deposit will be refunded.

What is the square footage of the Barn Room and seating capacity?

The Main Barn Meeting Room is 3,241 square feet and is capable of hosting 125 people seated at tables, or 150 people in lecture seating or standing only.

What is the square footage of the Silo Room and seating capacity?

The Silo Room has a diameter of 27' equaling 527 square feet of floor space, capable of hosting up to 40 people seated, lecture style, or standing.

Can I reserve a space over the phone?

Unfortunately, no. We require that we receive the contract through email or in person and the deposit fee before we finalize a rental.

My rental was held this past weekend, when should I expect my refund check for the security deposit?

All refunds will be available within 30 days after the event. The refund is given back via check and will be held at the office until the renter signs out for it.

I would like to rent the facility for a teen party, do you have any restrictions?

Yes, we do have certain restrictions for teen parties (ages 13-19). If you rent the barn, we require security to be hired for the event to ensure the safety of the youth. There must be a ratio of 1 adult (chaperone) for every 10 teens. The number of teens at the event must not exceed 60. We also require a list of every teen at the party, including their name and emergency contact information, provided at least 2 business days before the event.

Can I have alcohol at my party?

Yes, we allow rentals both indoor and outdoor to have alcohol. The Renter must purchase an Alcohol Permit and Liability from the OFPD for \$225. If you have a caterer who will be providing alcohol, they may already have their own.

Do indoor rentals include set-up time?

No, you must account for the set-up and clean-up in your rental time. Our staff sets up the tables and chairs prior to the rental start time, but any time the renter plans to be in the facility, they must rent for that time (i.e. to decorate, have the caterer or DJ set-up, etc.).

Follow us on Facebook
www.facebook.com/ofparks



Parks

What are the hours of your parks?

All parks are open from dawn to dusk.

What parks have rentable fields and/or picnic areas?

Sgt. Means Park and Bicentennial Park have rentable fields and picnic areas. Tolentine Park has a picnic shelter. Please call our main office for information regarding renting Sgt. Means Park.

Can I have a family picnic at a park picnic area?

We require all large gatherings (10+ people) to fill out a permit to receive permission from the Olympia Fields Park District. You may not host large events Olympia Fields Parks without prior written approval. Please contact our office about renting a picnic shelter: 708-481-7313

Can I grill or barbecue at the parks?

The park district allows grilling and barbecuing for park rentals at Bicentennial Park. No grilling is allowed at any other park.

Can I reserve an athletic field for our team practice?

The park district does reserve field space for organized team practices and games. When not reserved for games, the fields are available on a first come, first served basis. Please contact our office to reserve games on the fields: 708-481-7313



Are dogs allowed in the park?

Dogs are allowed in Olympia Fields Park District parks with the following restrictions:

- All dogs must be kept on a leash at all times and under the owner's control with the exception of District sponsored programs and events where it is specifically allowed by the District that dogs be unleashed. No leash shall be longer than 8 feet, and retractable leashes shall not be extended more than 8 feet. Unless otherwise specified, animals are not allowed at Park District programs, events, or in Park District buildings.
- The Director, in his/her sole discretion, may designate District property or District events as no dog areas or events, respectively, in cases where no owner or person having control of any dog shall cause or permit such dog to be in such area or present at such events.
- Dogs are not allowed within playground boarders, athletic fields/courts, spectator areas or areas as otherwise marked. Dogs shall not be tied or connected to any structure, tree or other object found on park property.
- The dog owner or person having control of any dog shall remove and dispose of, of District property, and excreta deposited by their dog anywhere on Park property. Safety is our primary goal at Olympia Fields Park District.
- District policy prohibits dogs in the park, unless they are a service dog in compliance with the Americans with Disabilities Act. Service dogs are allowed anywhere in our parks.

Where can I find a Dog Park?

Homewood-Flossmoor has a Dog Park. You will need to register your dog with the Village of Homewood before you are allowed to use it.

What should I do if I see a problem at one of the parks?

Please report emergencies and infractions of rules to the Olympia Fields Police Department at (708) 503-8100, or 911 in case of an emergency. Please report maintenance needs to Jesus Vargas, Executive Director at (708) 481-1713 ext.226 or email at jesus@ofparks.org

Can I play music at the parks?

Olympia Fields does not allow amplified music to be played at our parks. DJ's Bands, and other amplified speakers are prohibited. Bluetooth speakers and other device speakers are acceptable, but guests must be considerate of our parks' neighbors and keep volume at a reasonable level.

The parking lot is full, can we park in the grass?

We do not allow guests to park in the grass at any of our parks at any time. There is overflow parking available in the streets adjacent to Bicentennial Park and Sgt. Means Park

Can I have alcohol at the parks?

Alcohol is only allowed with a permit during rentals at Bicentennial Park and Sgt. Means Park. Alcohol is not permitted at Tolentine Park under any circumstances

SGT. Means Park

Who is Sgt. Means Park named after?

This park was named in tribute to Olympia Fields Police Sgt. Chester Means, who died December 15, 1967, of injuries sustained while on duty.

What is the history of the buildings and Sgt. Means Park?

A detailed history about Sgt. Means Park, the Bradford Barn, Silo, and Cull House is available on the History page of our website: www.ofparks.org

What is the distance of the walking path at Sgt. Means Park?

The path at Sgt. Means Park is ½ mile long.

How many parking spaces are there at Sgt. Means Park?

There are 71 parking spaces at Sgt. Means Park, including 3 handicapped spaces.

Bicentennial Park

What is the distance of the walking path at Bicentennial Park?

There are two circles to the path at Bicentennial Park. The first circle is 1 mile, and the other is 0.9 miles.

How many parking spaces are at Bicentennial Park?

There are 58 parking spaces at Bicentennial Park, including three handicapped spaces.

Tolentine Park

Where did the name 'Tolentine Park' originate?

Tolentine Park takes its name from the neighboring property to the north, which was named after the Augustinian Friar, St. Nicholas of Tolentine (1245-1305).

Who designated the new Tolentine Park?

Brusseau Design Group in 2012.

What is the distance of the walking path at Tolentine Park?

Two laps around the walking path at Tolentine Park is almost $\frac{3}{4}$ of a mile (about 80ft short).

How many parking spaces are at Tolentine Park?

There are 65 parking spaces at Tolentine Park, including 4 handicapped spaces.

Can an individual rent the Splash Pad?

We do not allow private party rentals for the Splash Pad. Individuals may rent out the Tolentine Picnic Shelter, but they will still have to pay the daily admission fees for each guest.

Can a school or other summer camp programs rent the splash pad?

Yes, please call the office for rates and availability.

Can you rent Tolentine Park?

Tolentine Park is designated as a community park, and it is not possible to rent the entire park. However, you can reserve the picnic shelter pavilion from dawn to dusk.

Office Closures

The office will be closed on the following dates:

- Monday, September 4 (**Labor Day**)
- Thursday, November 28 – November 30 (**Thanksgiving**)
- Tuesday, December 24-December 26 (**Christmas**)
- Tuesday, December 31 – January 2, 2024 (**New Year's**)
- Monday, January 20, 2025 (**Martin Luther King Day**)
- Monday, February 17, 2025 (**Presidents Day**)
- Friday, March 18, 2025 (**Good Friday**)
- Sunday, March 20, 2025 (**Easter**)
- Monday, May 26, 2025 (**Memorial Day**)
- Thursday, June 19, 2025 (**Juneteenth**)
- Friday, July 4, 2024 (**Independence Day**)

The office will have ½ days December 27, 30; January 3, 9am to noon

